



FOLGER ADAM SECURITY INC.

A member of the Yale Security Group

600 Series Electric Strike



Ideal for controlling traffic through doors wherever access control is desired.





FOLGER ADAM SECURITY INC.

A member of the Yale Security Group

Table of Contents

ELECTRIC STRIKES



● *Table of Contents*

INTRODUCTION	2
PRODUCT INFORMATION	3
HOW TO ORDER	4

● *Introduction*

Folger Adam Security Inc. is the premier manufacturer of high quality, high security access control products. Each of our products is built to be an incomparable value. Extensive use of investment-castings and stainless steel make them extremely durable and corrosion-resistant. Their attractive, functional finishes and monitoring switches make them adaptable to a wide range of access control applications.

From securing a perimeter to controlling entry to warehouse areas or computer rooms, Folger Adam has the hardware for your job. Our electric strikes exceed ANSI/BHMA A156.5 requirements for Electric Strikes and are listed by Underwriters Laboratories Inc. as burglary-protection devices. Non-Fail Safe models are also listed as fire door accessories.

An added value to our products is our network of manufacturers' representatives. They are seasoned professionals with years of experience in providing hardware solutions for commercial and industrial buildings. When you need assistance, you can turn to the Folger Adam representative with confidence.



FOLGER ADAM SECURITY INC.

A member of the Yale Security Group

600 Series

ELECTRIC STRIKES

• Application

The 600 Series Electric strike is designed to provide proper alignment and fit with a variety of lockset types, including cylindrical and mortise locksets. The 600 Series is designed to be used in aluminum, wood, and hollow metal door frames. With no center line relocation.

- 642 - For use with cylindrical locksets with up to 3/4" (19mm) throw latchbolts
- 652 - For use with mortise locksets with up to 3/4" (19mm) throw latchbolts
- 662 - For use with mortise locksets with 1" (25mm) deadbolts (deadbolt is not released)
- 672 - For use with mortise locksets with 1" (25mm) deadbolts (deadbolt is captured and released)

• Product Features

- Stainless steel construction to resist corrosion, add strength and durability
- Built for long life; exceeds 1 million cycle test
- Horizontally adjustable keeper to allow for door and frame misalignment
- Tamper resistant, heavy duty construction
- Full Height, 1" (25mm) keeper depth
- Non-handed, Reversible
- Non-Fail Safe (standard) Fail-Safe (optional)

• Optional Features

Indication Switches

- LBM Latchbolt Monitor
- LCM Locking Cam Monitor
- LCMLBM Locking Cam & Latchbolt Monitor
- LCBDM Locking Cam, Latchbolt & Deadbolt Monitor

Options & Accessories

- Deadbolt Retainer
- Cylinder Filler Plate
- Deadbolt Catcher

• Operating Voltages

AC: 6, 12, 16, 24, 48, 120

DC: 6, 12, 16, 24, 48, 120

Note: AC strikes use a DC solenoid with an externally attached, full-wave bridge rectifier.

• Faceplate Finishes

- US4 Satin brass, clear coated
- US10 Satin bronze, clear coated
- US10B Oxidized satin bronze, oil rubbed
- US26 Bright chromium plated
- US26D Satin chromium plated
- US32 Bright Stainless Steel
- US32D Satin Stainless Steel

• Certifications

Auxiliary locks and associated products

- ANSI / BHMA A156.5

Burglary Protection Equipment

- ANSI / UL1034

Fire Door Accessories (NFS models only)

- UL Listed for fire door assemblies up to 3 hours. UL10B.





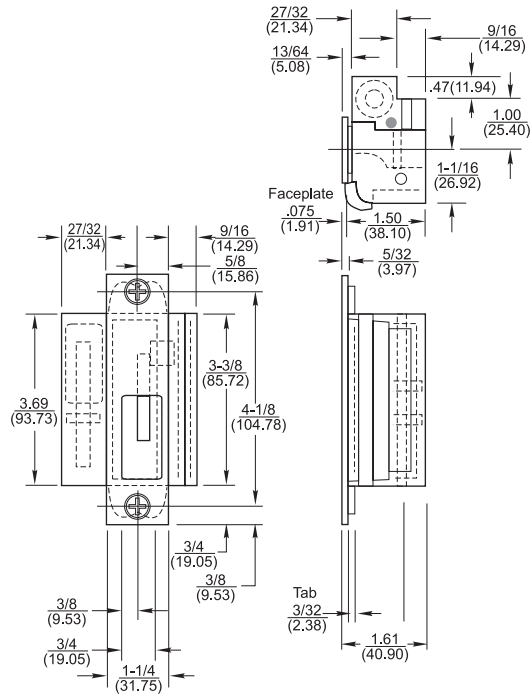
FOLGER ADAM SECURITY INC.

A member of the Yale Security Group

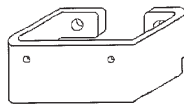
600 Series

ELECTRIC STRIKES

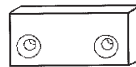
- *Dimensional Data (for reference only)*



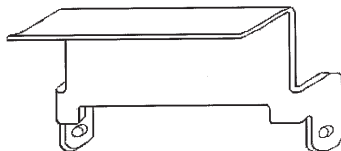
- *600 Series Accessories*



Deadbolt retainer



Cylindrical filler plate



Deadbolt catcher

