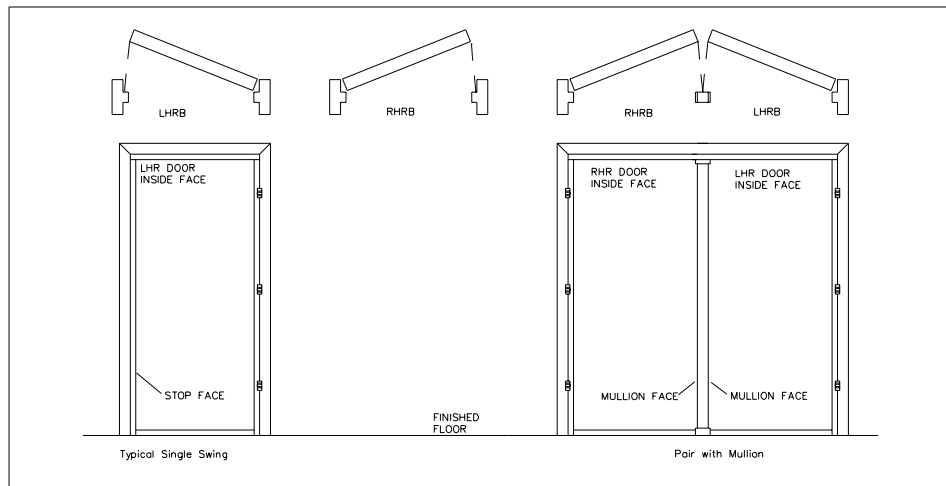
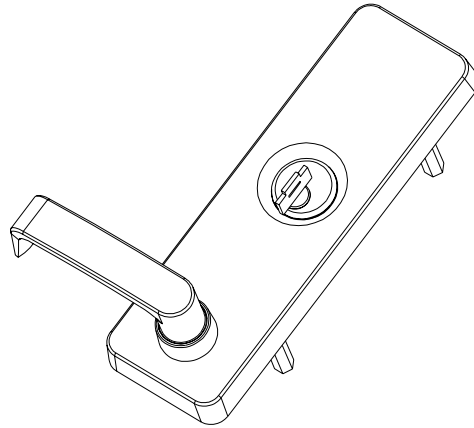


DETEX CORPORATION, 302 DETEX DRIVE, NEW BRAUNFELS, TEXAS 78130 (830)629-2900 1-800-729-3839 FAX(830)620-6711
E-Mail: detex@detex.com Internet: www.detex.com

INSTALLATION INSTRUCTIONS FOR THE ECL-620 OUTSIDE LEVER TRIM FOR ECL-600



TOOLS AND SUPPLIES

- Pencil
- Adhesive Tape
- Center Punch
- Hammer
- Drill Motor
- Drill Bits & Taps - See Drill & Tap Schedule A (pg. 2)
 - #24, #25 or 9/64" drill bit - **4" long minimum**
- Screw Driver (Phillips Drive)
- Tape Measure

DRILL & TAP SCHEDULE A

<u>FRAME HOLES</u>	<u>WOOD FRAME</u>	<u>METAL FRAME</u>		
A. (2 EA)	#14 SCREWS 3/16 DRILL	#14 SCREWS #9 DRILL	OR	1/4-20 MACHINE SCREWS #7 DRILL; 1/4-20 TAP
B. (4 EA)	#10 SCREWS 1/8 DRILL	#10 SCREWS #25 DRILL	OR	10-24 MACHINE SCREWS #25 DRILL; 10-24 TAP

<u>DOOR INSIDE HOLES</u>	<u>WOOD DOOR</u>	<u>METAL DOOR</u>		
C. (6 EA) (Holes 5,6,7,9,10,11)	#14 SCREWS 3/16 DRILL	#14 SCREWS #9 DRILL	OR	1/4-20 MACHINE SCREWS #7 DRILL; 1/4-20 TAP
D. (4 EA) (Holes 1,2,3,4)	#24, #25, OR 9/64" DRILL BIT 4" LONG MINIMUM PILOT, THRU HOLE NOTE: Center of "E" Holes	SAME		
E. (4 EA) (Holes 1,2,3,4)	1/2" WOOD BIT HALFWAY THRU DOOR	1/2" DRILL BIT HALFWAY THRU DOOR	OR	1/2" HOLE SAW HALFWAY THRU DOOR
F. (1 EA)	1/2" WOOD BIT HALFWAY THRU DOOR	1/2" DRILL BIT HALFWAY THRU DOOR	OR	1/2" HOLE SAW HALFWAY THRU DOOR
G. (1 EA)	1" WOOD BIT THRU DOOR	1" HOLE SAW THRU DOOR		
H. (2 EA) OPTIONAL FOR MULLION	#10 SCREWS 1/8 DRILL	#10 SCREWS #25 DRILL	OR	10-24 MACHINE SCREWS #25 DRILL; 10-24 TAP

<u>DOOR OUTSIDE HOLES</u>	<u>WOOD DOOR</u>	<u>METAL DOOR</u>
LOCATE THE REMAINING "D" PILOT HOLES ON OUTSIDE FACE OF DOOR		
I. (1 EA)	1 1/2" WOOD BIT AT LEAST 1 1/8" DEEP, BUT NOT THRU	1 1/2" HOLE SAW AT LEAST 1 1/8" DEEP, BUT NOT THRU

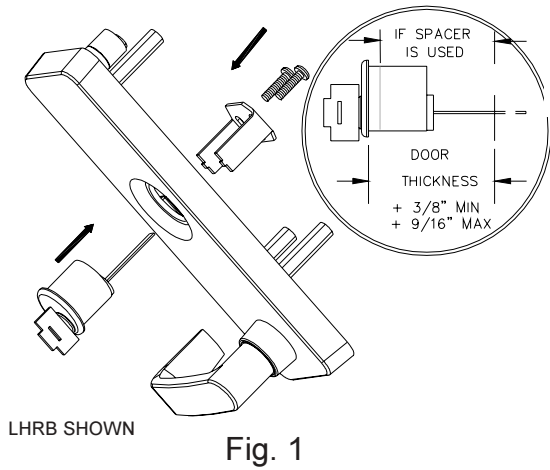


Fig. 1

Preparing the ECL-620 for Installation

1. Assemble the rim cylinder (not included) through the escutcheon and the cylinder retaining bracket as shown in **Fig. 1**. Add cylinder spacer or cut the tailpiece as shown.

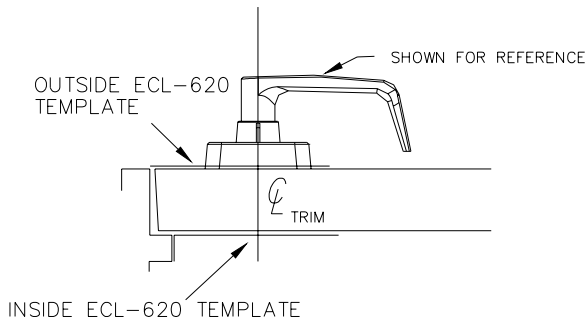


Fig. 4

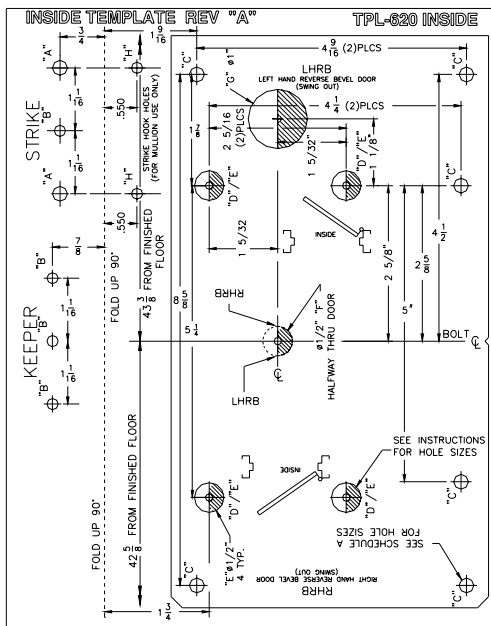


Fig. 5

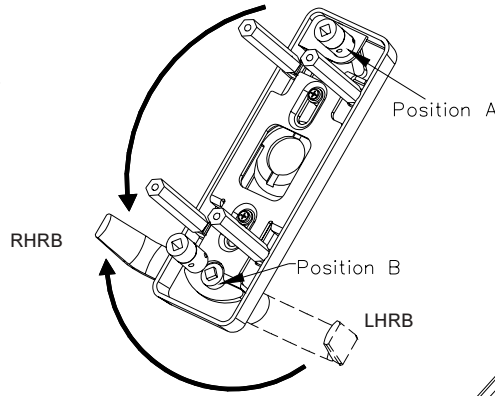


Fig. 2

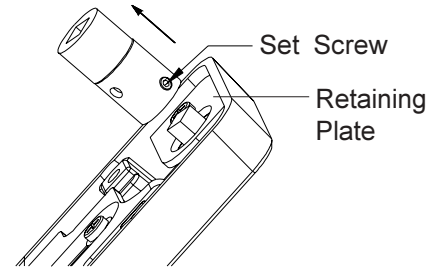


Fig. 3

2. *See page 1 for handing illustrations.*
The lever trim as received is handed for LHRB, Left Hand Reverse Bevel, doors. If your door is LHRB, proceed directly to step 3. If the door is a RHRB, then the lever needs to be reversed and the input extension needs to be moved from position A to position B. (See **Fig. 2**.) To do so:

-Remove the Lever Input Extension from position A by first loosening its set screw. (See **Fig. 3**) Remove, likewise, the short locking collar at position B and discard it. Remove screw and discard the retaining plate, screw and the loose parts under the retaining plate.

-Remove lever from collar and rotate the lever 180°. Reinstall it through the butterfly cam. Secure the lever by tapping down the Lever Input Extension, taken from position A, onto the square shaft of the lever and tighten the set screw. When reinstalled, the free end of the lever will point toward the hinge side of the door, not the strike.

The outside lever trim is now completely assembled.

Preparing the Door and Frame

USE THE INSIDE TEMPLATE TPL-620 PROVIDED WITH ECL-620 LEVER

3. Orient the **INSIDE** template TPL-620 for proper door handing and tape to door per **Fig. 4**.
4. See **Fig. 5** for hole locations.

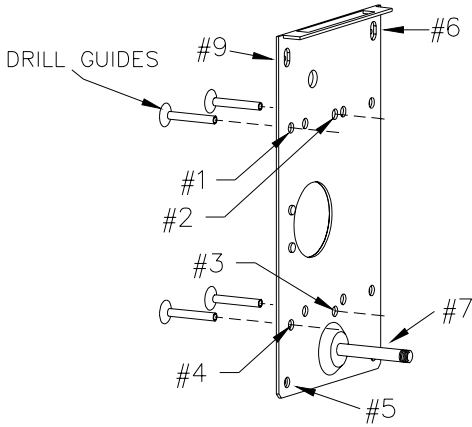


Fig. 6
LHRB SHOWN

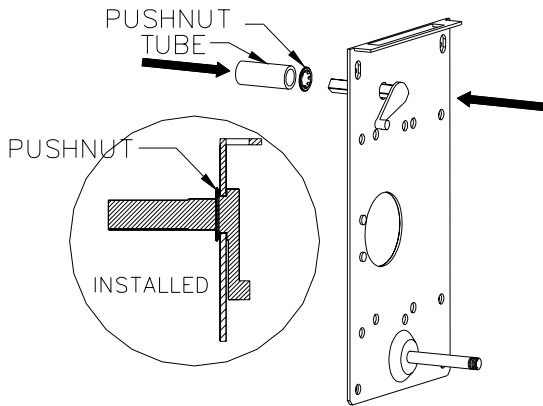


Fig. 7
LHRB SHOWN

PREPARING THE OUTSIDE OF DOOR

Fig. 8

13. Place **OUTSIDE TEMPLATE**, TPL-620, align 4 holes marked "E" with pilot holes "D" and secure with tape.
14. **Ensure proper handing before proceeding.**
15. Mark, center-punch and drill 1" hole marked "G".
16. Mark, center-punch and drill 1 1/2" hole marked "I" at least 1 1/8" deep from outside to inside, but do not drill through.
17. Locate 4 existing holes marked "E" and drill through door.
18. Remove **OUTSIDE TEMPLATE** TPL-620 and discard.

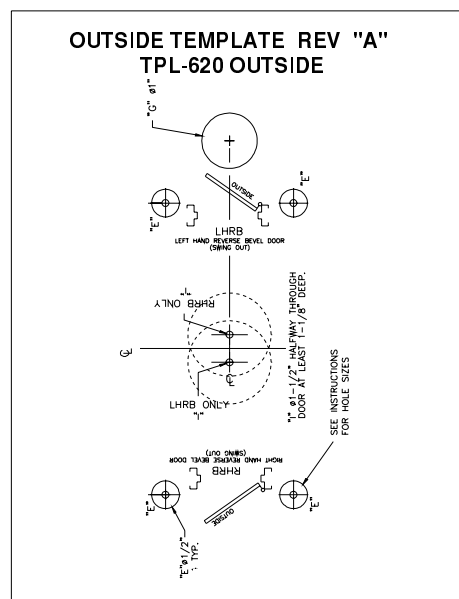


Fig. 8

4. Refer to Drill & Tap Schedule A (page 2):

- a. Mark, center-punch, and drill 6 holes marked "C" on the door.
- b. Mark, center-punch, drill and tap the two (2) * outer holes of the strike, marked "A" on the frame.
- c. Mark, center-punch, drill and tap the two (2) * outer holes of the keeper, marked "B" on the frame.

*** Do not mark or drill center holes marked "B" on keeper and strike at this time.**

- d. Mark and center-punch only, holes marked "E, F and G".
- e. FIRE RATED pair of doors with mullion: strike hook is required. Mark, center-punch, drill and tap two (2) holes marked "H" on the door.

Backplate

5. Fig. 6

Insert 4 Drill Guides through holes "1, 2, 3, 4" on backplate and secure with adhesive tape. (Holes "E" - Template)

6. Place the backplate with drill guides attached onto the door. Temporarily secure 4 screws at holes marked "5, 6, 7 and 9". Verify drill guides are centered.
7. Use a minimum 4" long #24, #25 or 9/64" drill bit to drill **straight** through door at 4 drill guide locations (Holes 1, 2, 3, 4 - "D" holes).
8. Remove backplate from inside face of door and remove 4 drill guides.
9. Drill 1/2" holes marked "E" and "F" **halfway** through door from inside to outside.
10. Drill 1" hole marked "G" **halfway** through door from inside to outside.
11. Remove Inside Template TPL-620 from face of door and discard.

Preparing ECL-600 Backplate for the ECL-620

12. Fig. 7

Install the input lever cam onto the backplate with the push nut, using disposable tube as shown. Discard tube after use.

INSTALLATION

Fig. 9

19. Re-install backplate onto the door. Secure with 2 screws at holes marked "5" and "7".
 20. Align cam with hole marked "8" and tape to secure.
 21. Insert ECL-620 LEVER TRIM into hole on door. Align key cylinder tailpiece thru door. Align input extension with lever input cam.
- TIP:** Rotating trim lever back and forth and moving backplate, facilitates alignment.
22. Install short 1/4" - 20 machine screw through hole marked "2".
 23. Remove tape from cam and discard.
 24. Install relatching assembly with two #14 screws in holes marked "6" and "9".

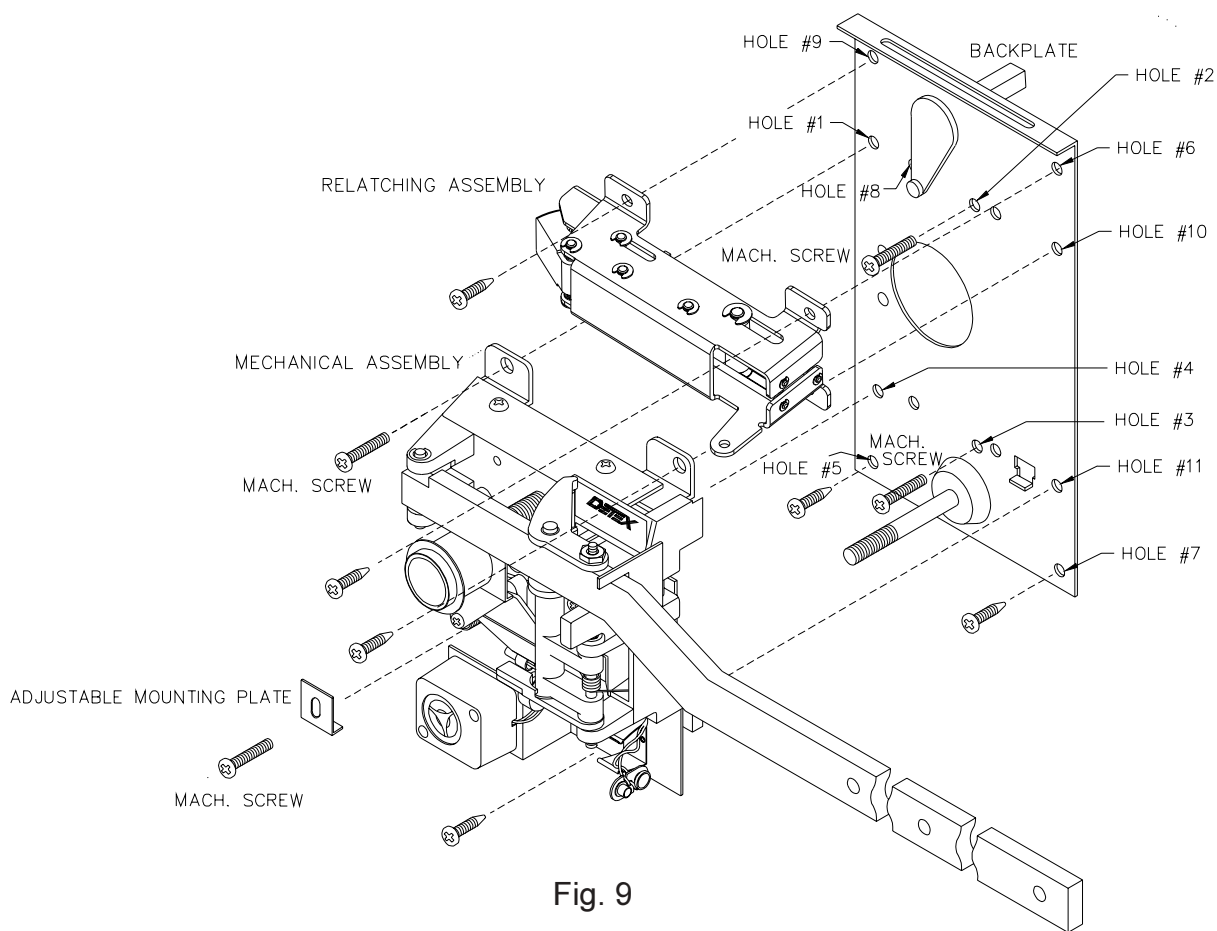


Fig. 9

QUESTIONS?

Contact Customer Service
at
1-800-729-3839

Fig. 10

25. Remove OKC retaining spring and align marks.

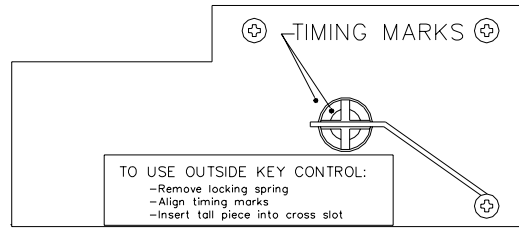


Fig. 10

Fig. 11

26. Engage alignment bolt on mechanical assembly with alignment hole on relatching assembly as shown in Detail 1.
27. Install mechanical assembly with screws in holes marked "1, 10, 11 and 3".
28. Install adjustable mounting plate in hole marked "4".
29. Install actuating bar and lever.
30. Lubricate mechanism.
31. Engage bolt and latch into keeper and strike. Adjust keeper and strike as necessary. Tighten screws into place.
32. Drill center "B" holes for keeper and strike.
33. Install screws and tighten.

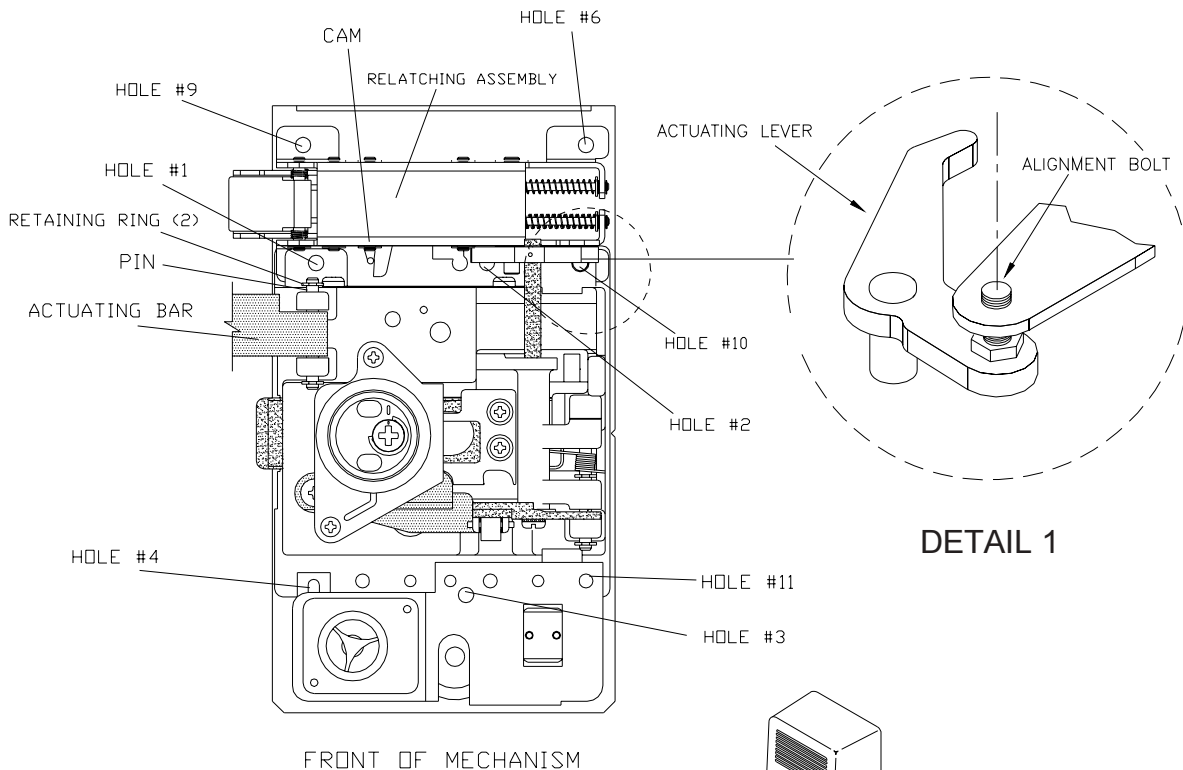


Fig. 11

Fig. 12

34. Install 9V battery.
35. Insert actuating bar through hole in cover and slide over bar.
36. Install paddle on bar and close and screw lock cover.

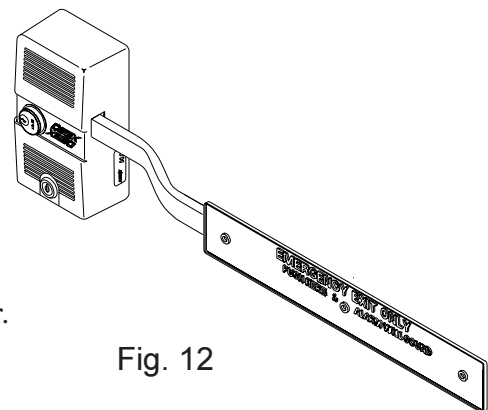
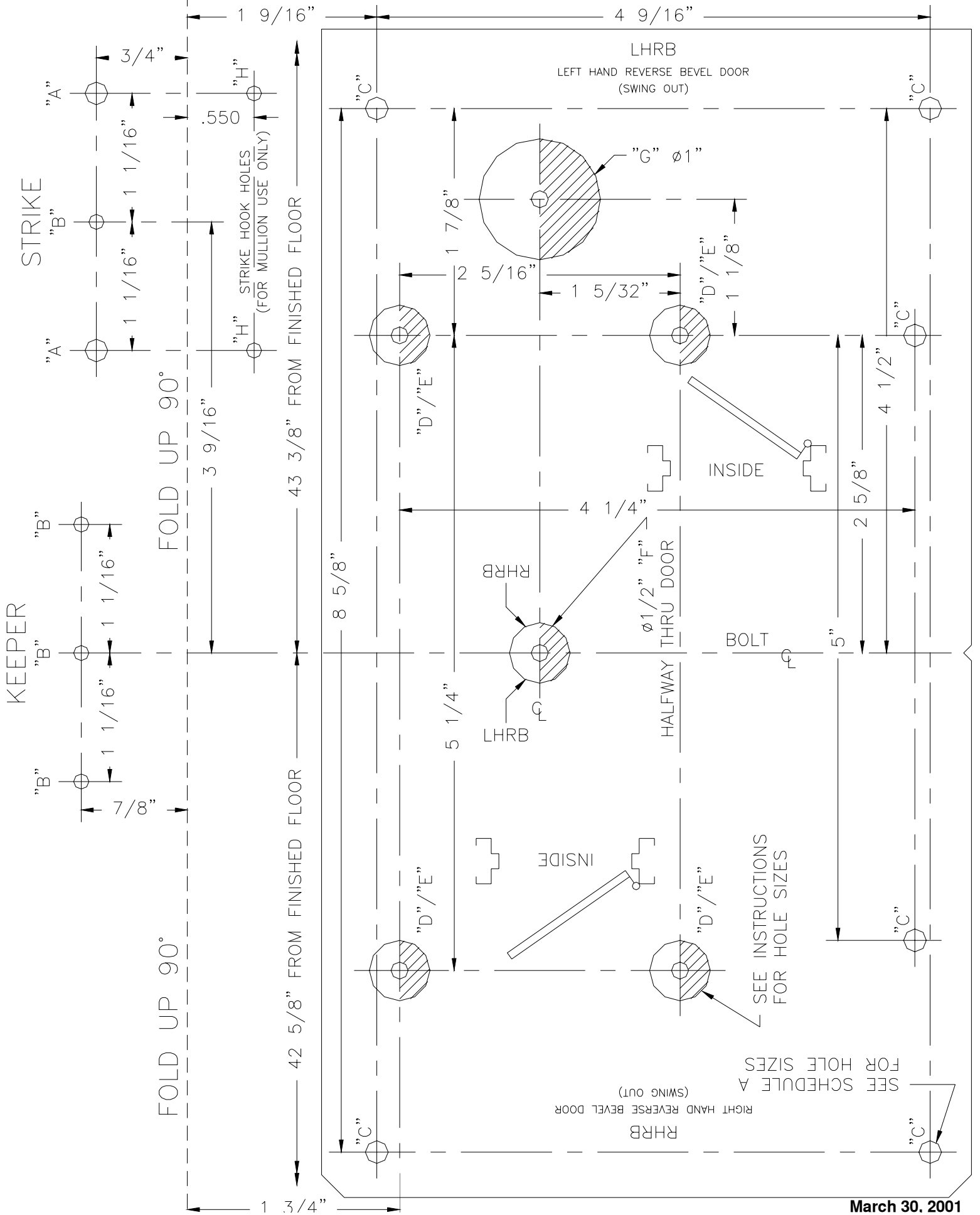


Fig. 12

NOTE: DIMENSIONS MAY NOT BE ACCURATE WHEN PRINTING FROM WEBSITE
PLEASE CONFIRM DIMENSIONS WITH RULER BEFORE USE

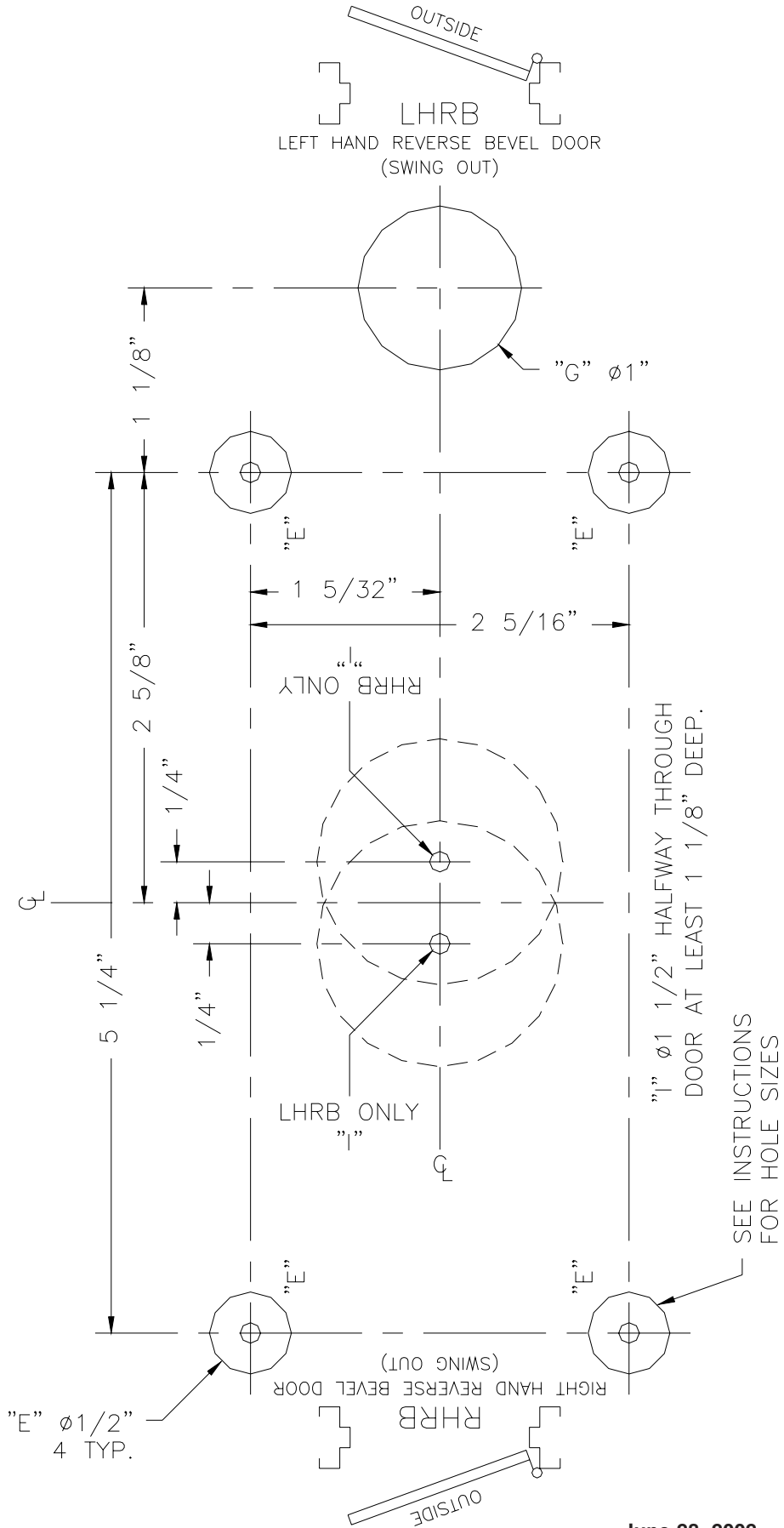
INSIDE TEMPLATE REV "A"

TPL-620 INSIDE



March 30, 2001

NOTE: DIMENSIONS MAY NOT BE ACCURATE WHEN PRINTING FROM WEBSITE
 PLEASE CONFIRM DIMENSIONS WITH RULER BEFORE USE
 OUTSIDE TEMPLATE REV "A" TPL-620 OUTSIDE



June 28, 2002