

# XM-1 MOTION DETECTOR EXIT PACKAGE

*Passive Infrared Request-To-Exit Functionality For Magnetic Locks*



## OVERVIEW

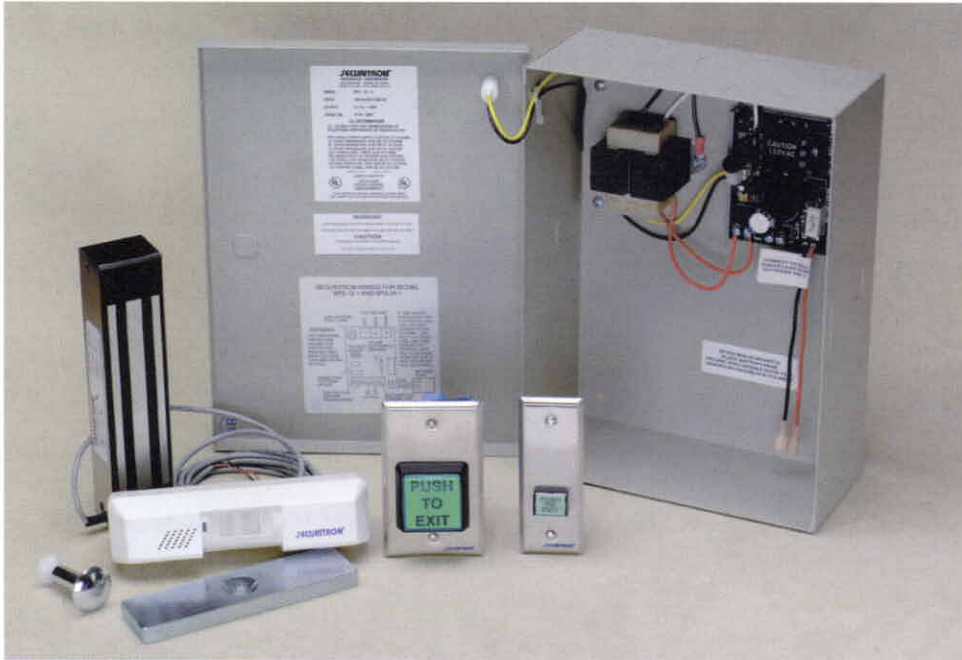
Securiton's **XM-1 and XM-1N** are complete, **UL listed, dual voltage** integrated electronic egress packages designed to operate on a magnetically secured door while fully complying with US building codes (BNBC, SBC, UBC, NFPA) under the rules for **Access Controlled Egress Doors**. The XM-1 consists of Securiton's model **XMS** egress motion detector and the **EEB2** integrated push button/timer. The EEB2 mounts in a **single gang cut-out**. The XM-1N also includes the XMS motion detector but substitutes the **EEB3N** integrated push button/timer which mounts directly on a 1 3/4" **narrow stile door frame**.

## OPERATION

The door is **secured with a magnetic lock** such as Securiton's Magnalock series or SAM shear lock. Typically, controlled entry from the outside is made possible via a device such as a card reader or digital entry

keypad such as Securiton's DK-26. However, when the door in question is **part of the building egress path**, safe and approved free exit must be provided for individuals **without requiring special tools or knowledge**. With the XM-1 package, the primary means of egress is the XMS egress motion detector. A person approaching the door is "seen" by the detector just before he reaches the door. The XMS automatically cuts power to the magnetic lock, allowing the individual to freely exit without even realizing that the door is secured!

For **additional safety** (as required by codes) in case of any possible malfunction with the detector, an integrated push button timer is mounted next to the door. Momentarily pressing the button will release the door from a different circuit for 30 seconds (allowing individuals following to use the door as well). The EEB2 or EEB3N units are **retriggerable**. Each time the button is pressed, the door stays released for 30 seconds regardless of where it was in the release cycle at the time the button was pressed.



**THE XMS PACKAGE INTEGRATES EASILY WITH OTHER COMPONENTS, BUT FOR A COMPLETE SYSTEM, ORDER IT WITH AN AWARD-WINNING BPS POWER SUPPLY AND MAGNALOCK®!**

## THE XMS: DESIGNED FOR THE PURPOSE



The XMS is unique among curtain type motion detectors because it has been specifically configured to **reliably release magnetic locks** as opposed to detecting an intrusion. A number of XMS product features deliver this benefit.

- Operation is **fail safe**. Should the detector lose power, the lock will automatically release.
- Lock control switching is done by a **heavy duty field effect transistor** rather than by lower capacity relay contacts.

- The lock released state is **maintained for a trailing four seconds** after detection. This avoids the risk of relocking if the individual intending to exit pauses for a moment.

- A **REX signaling relay** is included which can be connected to the access control system to annunciate that someone is exiting and therefore **suppress an alarm event**.

- **The detection pattern can be precisely adjusted** to suit the door environment so that detection of persons going past the door can be avoided and security against unauthorized entry can be optimized.

- The unit will operate on any **DC voltage between 12 and 28 v**.



© Copyright, Securitron Magnalock Corp., 1999. All rights reserved.  
910-10170 rev: 6/99

## PUSH BUTTON / TIMERS: RUGGED AND INTEGRATED

The two push button/timers respectively configured for single gang (EEB2) or narrow stile (EE3BN) mounting, are fully integrated so that you need only connect a power source (**12 or 24 VDC**) and the magnetic lock to color coded wires. The retriggerable, **30 second code mandated timing function is automatically activated as is double break control** of the magnetic lock for additional safety. Double break control means that when the button is pressed, the button itself immediately and directly cuts power to the magnetic lock while at the same time an internal timer controlled relay also cuts power to the magnetic lock at a second point in the circuit. Therefore, should the timed contacts fail for example, the button itself will still release the door. Finally, the button surfaces are legended according to US code requirements to prompt persons as to the proper use of the door.

## TECHNICAL DATA

Input voltage: 12 or 24 VDC.  
Power draw: 20-50 mA, depending on switching status.  
Environment: Indoor use only.

## ORDER THE PACKAGE, OR SEPARATELY

For maximum convenience, the XM-1 and XM-1N may be ordered as packages or the XMS, EEB2 and EEB3N system components may be ordered separately for integration with other components.

**MAGNACARE™**  
LIFETIME REPLACEMENT WARRANTY

An ASSA ABLOY Group company

World Leader in Electronic Locking Products and Systems, Securitron is Peerless in Quality, Innovation and Customer Satisfaction.

The ASSA ABLOY Group is the world's leading manufacturer and supplier of locks and associated products, dedicated to satisfying end-user needs for security, safety and convenience.

**ASSA ABLOY**