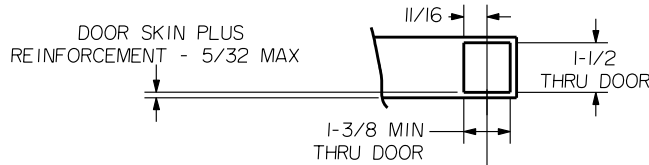
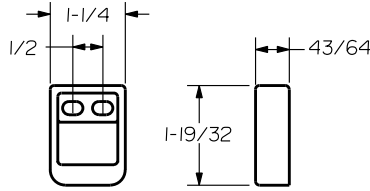


SEX BOLT MACHINING

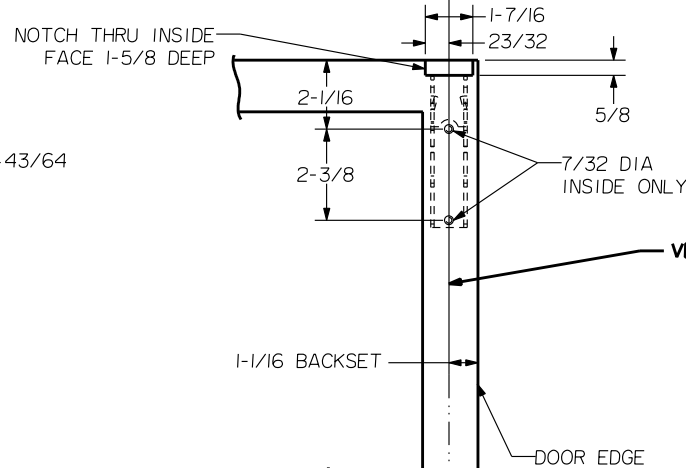
DRILL 1/4 DIA. INSIDE
DRILL 5/16 DIA. OUTSIDE



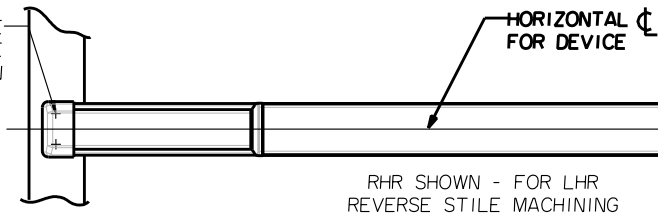
NOTCH THRU INSIDE
FACE 1-5/8 DEEP



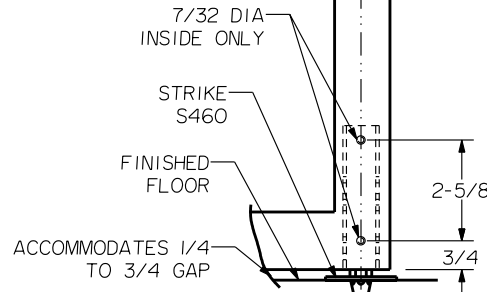
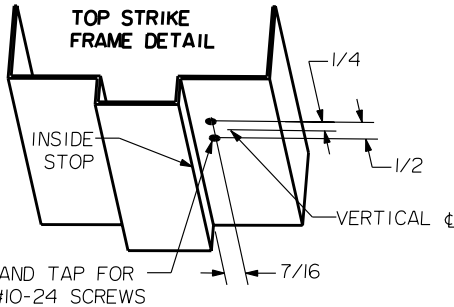
S519 TOP STRIKE
(SURFACE APPLIED)



PREPARE THESE
HOLES AT DEVICE
INSTALLATION

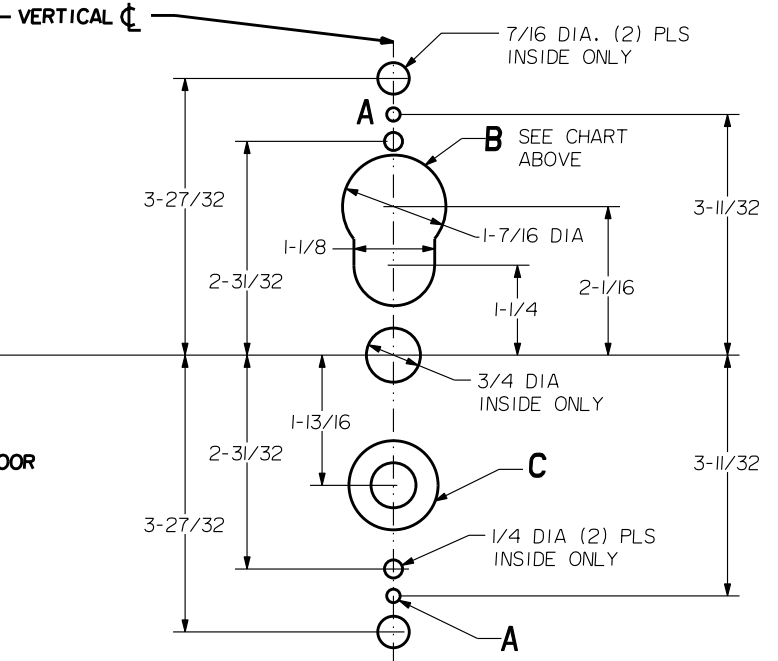


39-15/16
FINISHED FLOOR



DEVICES	TRIMS	HOLE A (2) PLS	HOLE B	HOLE C
26	2908	1/4 DIA INSIDE 13/32 DIA OUTSIDE	OUTSIDE ONLY	5/8 DIA INSIDE 1-3/8 DIA OUTSIDE
	2914		NOT REQ'D	

LOCK STILE MACHINING



PRECISION HARDWARE INC.
WWW.PRECISIONHARDWARE.COM

DEVICE SERIES		TRIM SERIES	
26, 26LBR		2908, 2914	
STRIKE NO.	RELEASED DATE	TEMPLATE NO.	REV
S519, S460	04/01/03	AL-26B	A

NOTE: "LETTER" AT END OF TRIM MODEL NO.
DESIGNATES LEVER STYLE. EXCEPT AS NOTED,
LEVER STYLE HAS NO EFFECT ON STILE MACHINING.

LBR DEVICES:
OMIT BOTTOM BOLT MACHINING.