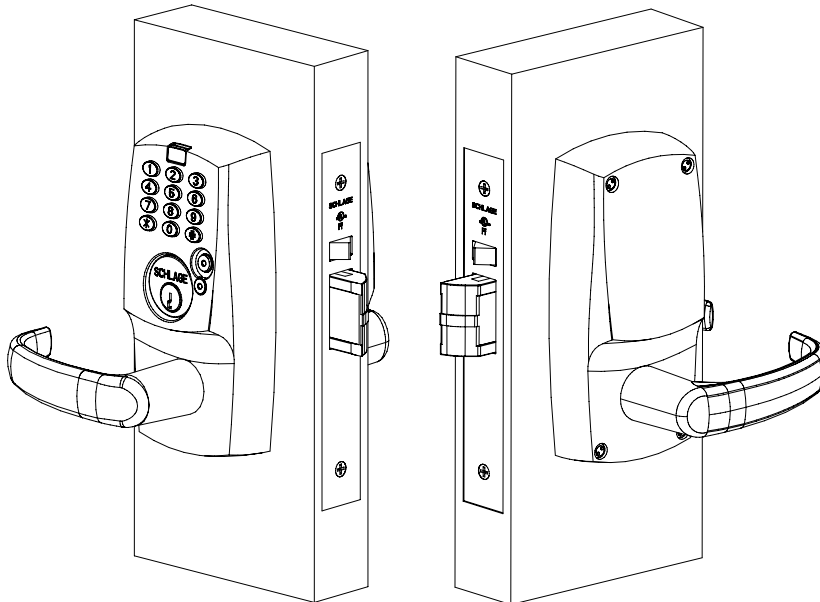


King COBRA BY SCHLAGE®

Installation Instructions

KC5500

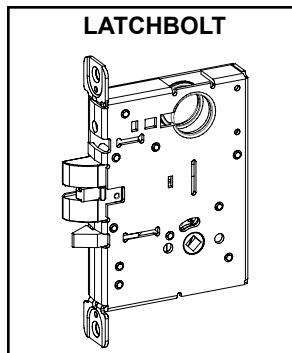
Manually Programmable Mortise Lock



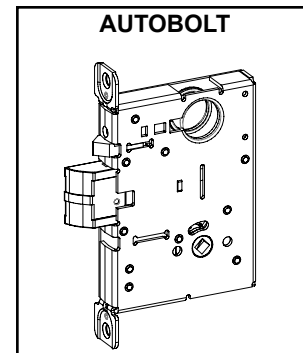
The KC5500 Manually Programmed Mortise locking system can hold up to 120 codes and/or iButtons. The lock is powered by four, standard AA batteries. Manual emergency mechanical override uses a standard 1-1/8" (or longer) mortise cylinder. The KC5590 has the "Lock" and "Unlock" buttons on the inside for office function. The KC5591 has the office function buttons with the autobolt type of latch.

SEE PROGRAMMING GUIDE (FORM 57042)
FOR PROGRAMMING INFORMATION

KC5596

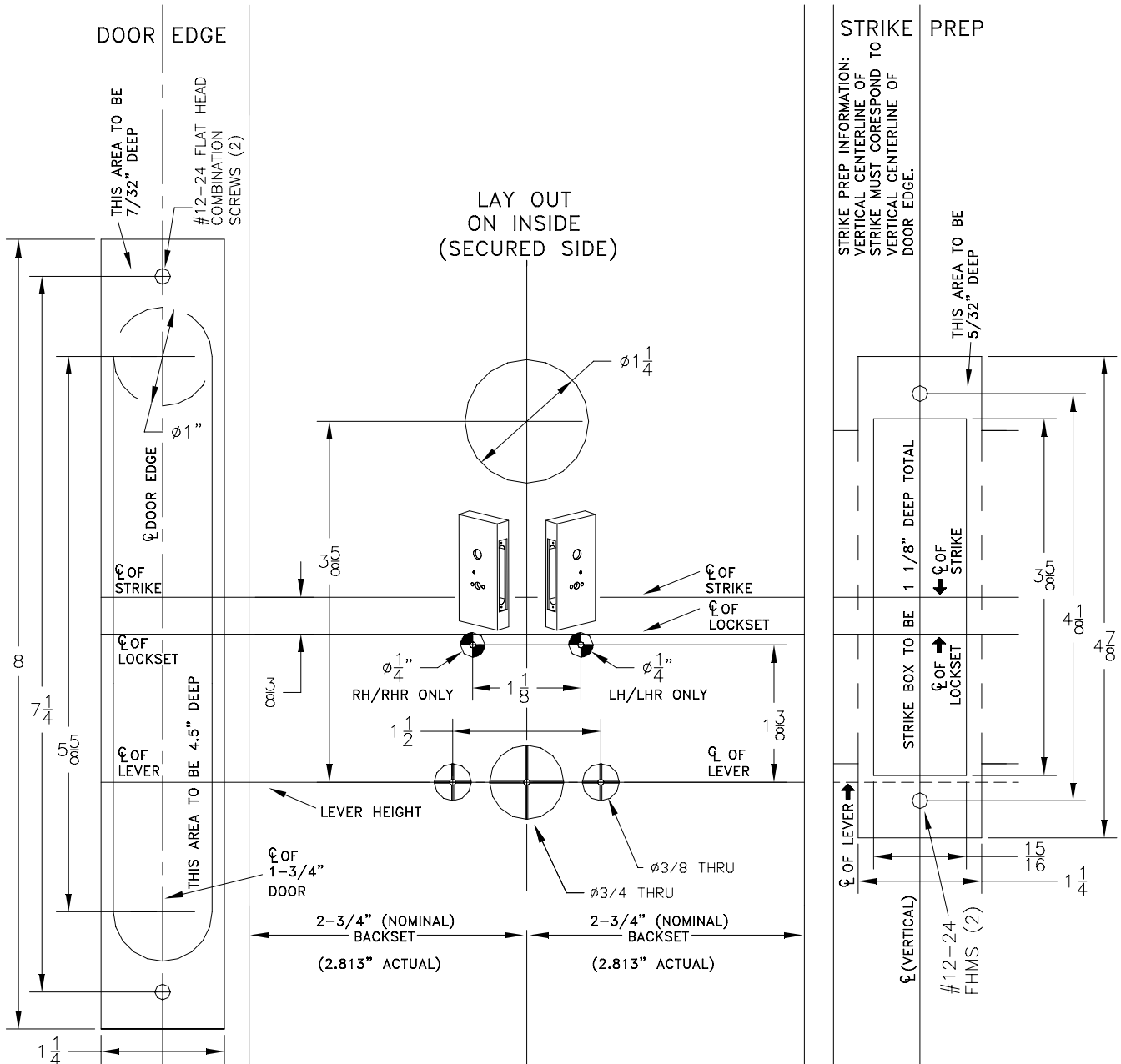


KC5594



1. PREP DOOR & FRAME FOR LOCK:

Use the paper template or information below to prep door, latch and frame. Dimensions are in inches.



2. CHANGE LOCK HAND (IF NECESSARY):

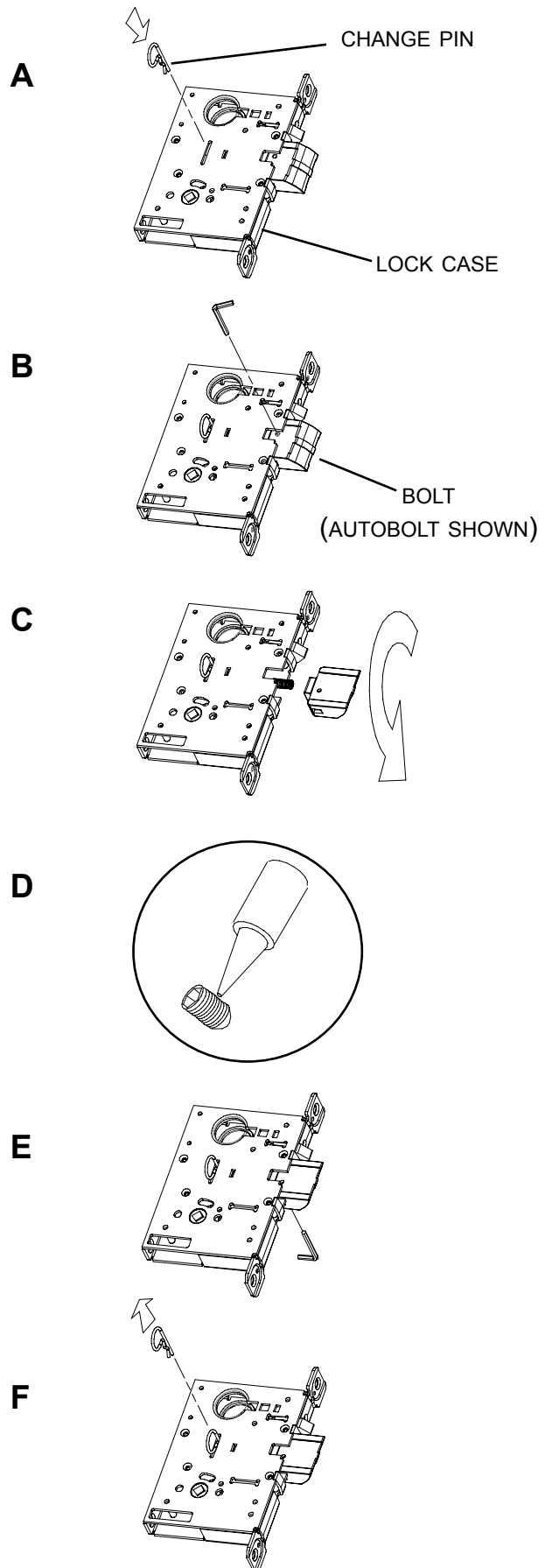
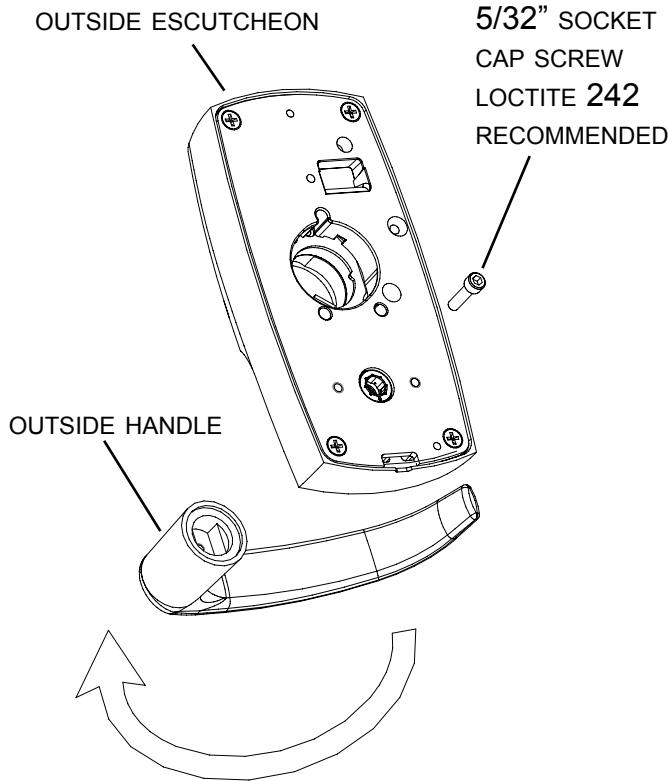
NOTE: The locks are shipped as ordered from factory. If it is necessary to change the hand of the lock, follow the steps below:

TO CHANGE HAND OF LOCK CASE:

- A. With bolt fully extended, insert change pin (included in the hardware pack) into hole. (It will snap over a groove on the main shaft, holding it in place.)
- B. Remove set screw in bolt so bolt can be removed.
- C. Rotate bolt and reinstall on to shaft. Do not remove spring.
- D. Apply thread locking compound to set screw.
Loctite 242 recommended.
- E. Install and tighten set screw (from other side, as shown).
- F. Remove change pin.

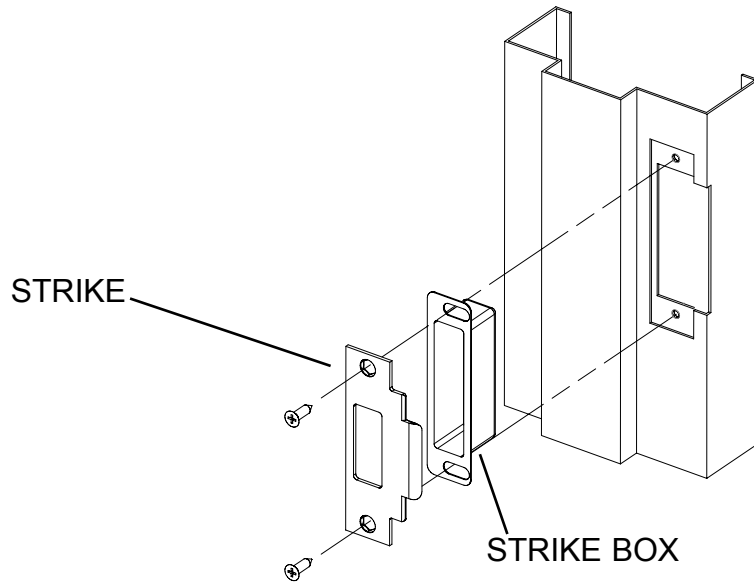
TO CHANGE HAND OF LEVERS:

- A. Loosen 5/32" socket cap screw and remove lever.
- B. Rotate handle to opposite position.
- C. Apply thread locker to screw. Loctite 242 recommended.
- D. Reinstall handle.
- E. Repeat for inside escutcheon (not shown).



3. INSTALL STRIKE:

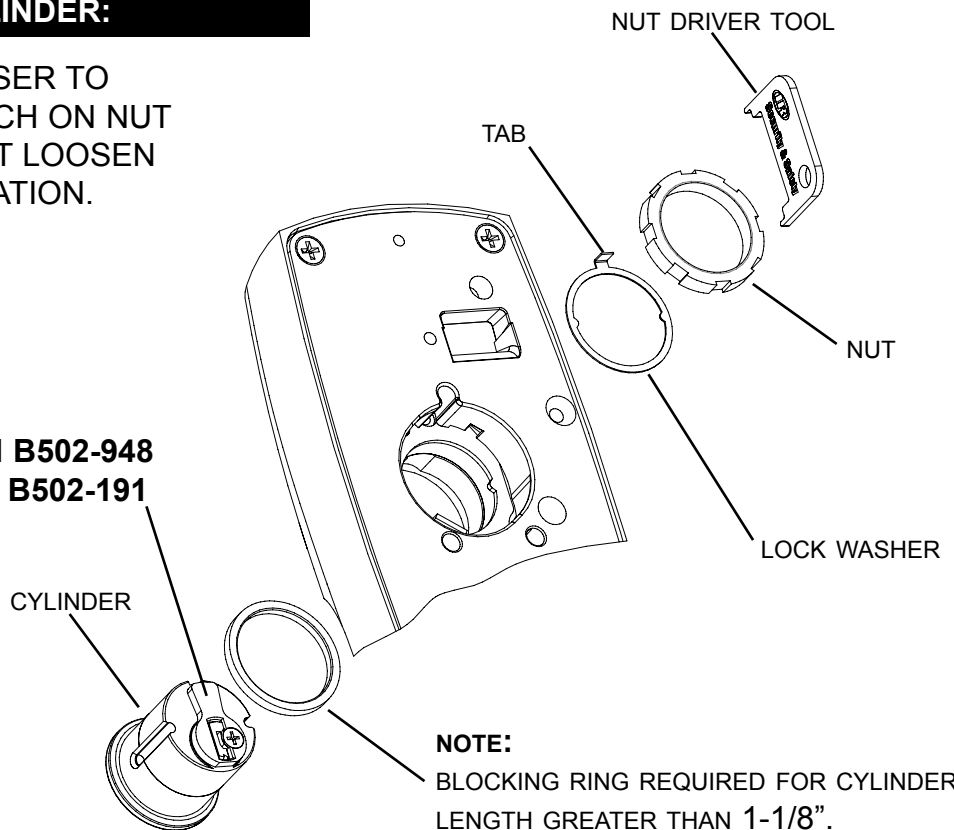
IMPORTANT! STRIKE PROVIDED MUST BE USED FOR PROPER OPERATION.



4. INSTALL MORTISE CYLINDER:

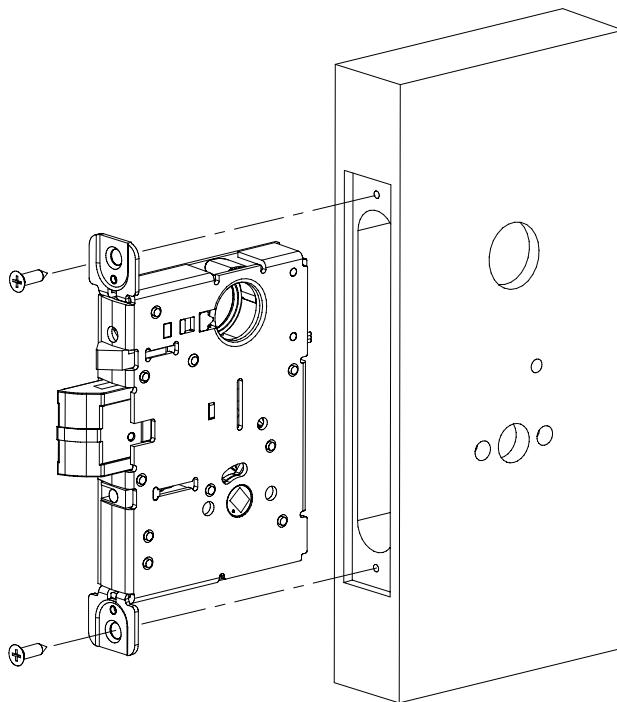
BEND TAB ON LOCK WASER TO ENGAGE NEAREST NOTCH ON NUT SO CYLINDER DOES NOT LOOSEN DURING NORMAL OPERATION.

**RECOMMENDED CAM:
SCHLAGE EVEREST: P/N B502-948
SCHLAGE CLASSIC: P/N B502-191**

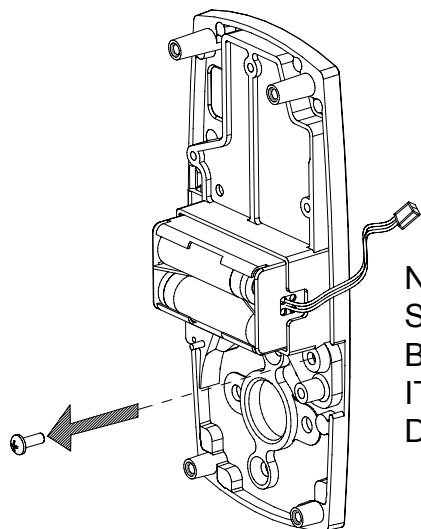


NOTE:
BLOCKING RING REQUIRED FOR CYLINDER LENGTH GREATER THAN 1-1/8".
THICKNESS = CYLINDER LENGTH - 1 1/8"

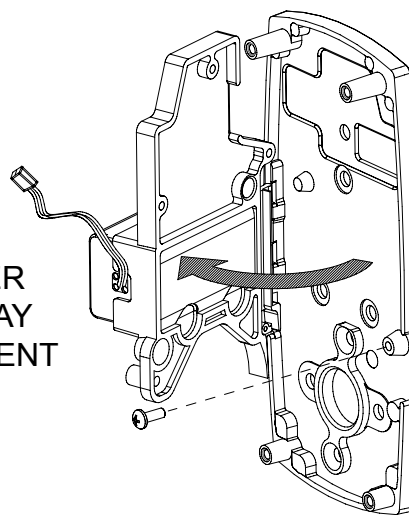
5. INSTALL MORTISE LOCK:



6. PREPARE INSIDE BASEPLATE FOR INSTALLATION:



NOTE: BATTERY HOLDER SHOWN IN PLACE. IT MAY BE REMOVED TO PREVENT IT FROM FALLING OUT DURING INSTALLATION.



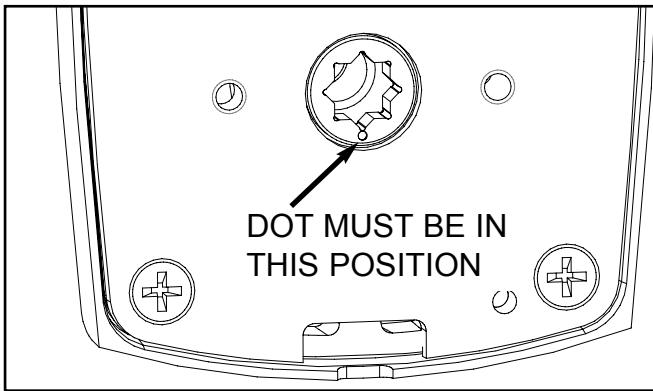
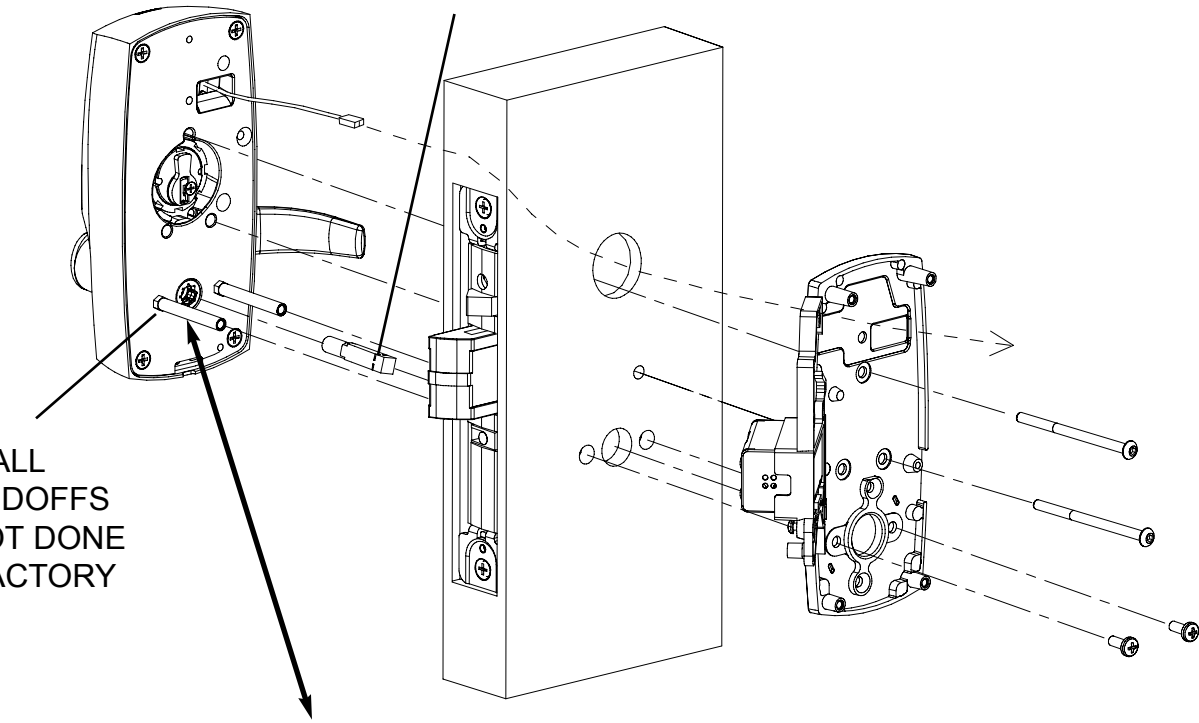
A. Remove hinge screw from inside baseplate assembly.

B. Swing hinge away from baseplate.

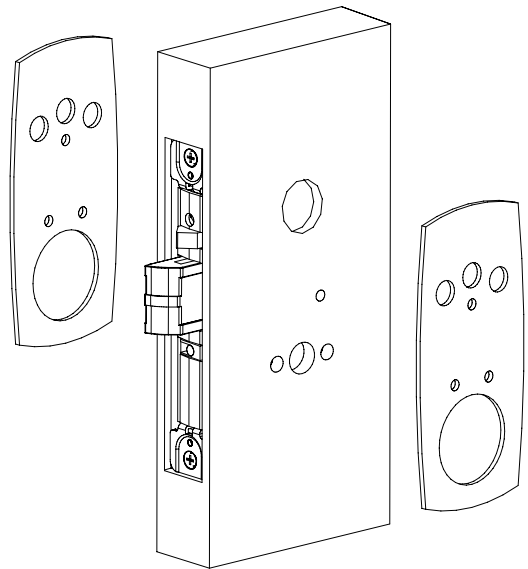
8. INSTALL OUTSIDE ESCUTCHEON, SPINDLE AND INSIDE BASEPLATE:

INSTALL INSIDE
SPINDLE AS SHOWN.

INSTALL
STANDOFFS
IF NOT DONE
AT FACTORY

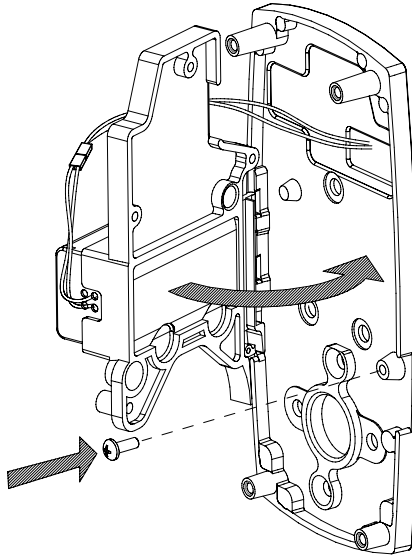


NOTE: 1-3/8" DOORS REQUIRE
SPACER PLATES AS SHOWN
BELOW:



10. PLUG IN BATTERY HARNESS AND SECURE HINGE TO BASEPLATE:

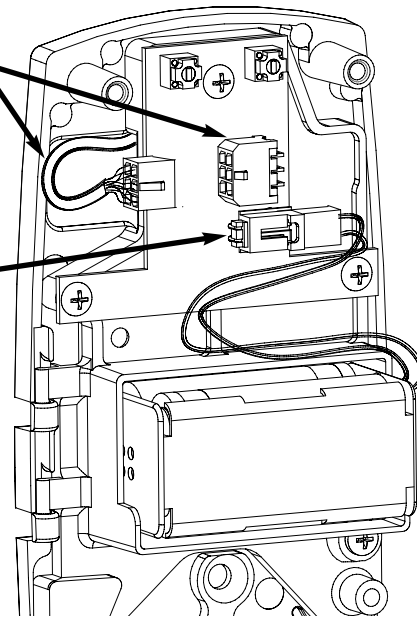
CONNECT BATTERY PACK AND ROUTE WIRING AS SHOWN



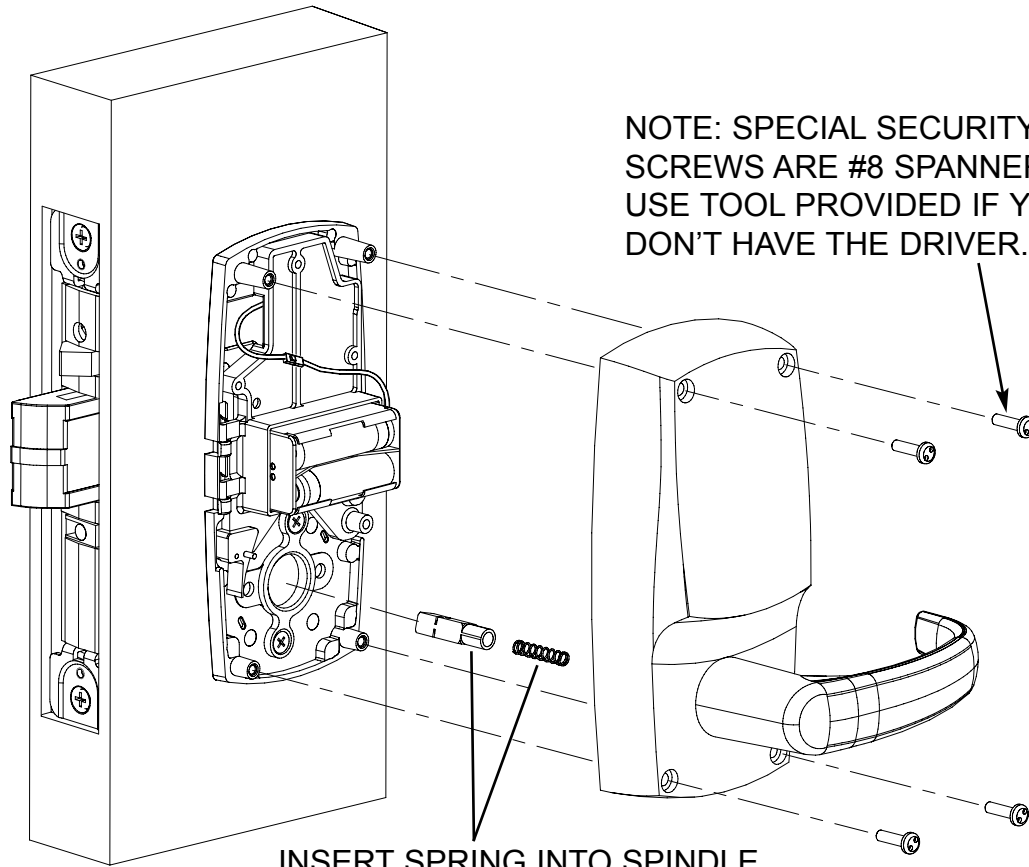
OFFICE FUNCTION ONLY:

PLUG IN OUTSIDE ESCUTCHEON HARNESS TO PC BOARD

INSTALL BATTERIES AND PLUG IN BATTERY PACK TO PC BOARD



10. INSTALL INSIDE SPINDLE, SPRING AND ESCUTCHEON:



NOTE: SPECIAL SECURITY SCREWS ARE #8 SPANNER. USE TOOL PROVIDED IF YOU DON'T HAVE THE DRIVER.

INSERT SPRING INTO SPINDLE.

9. INSTALL ARMOR FRONT:

