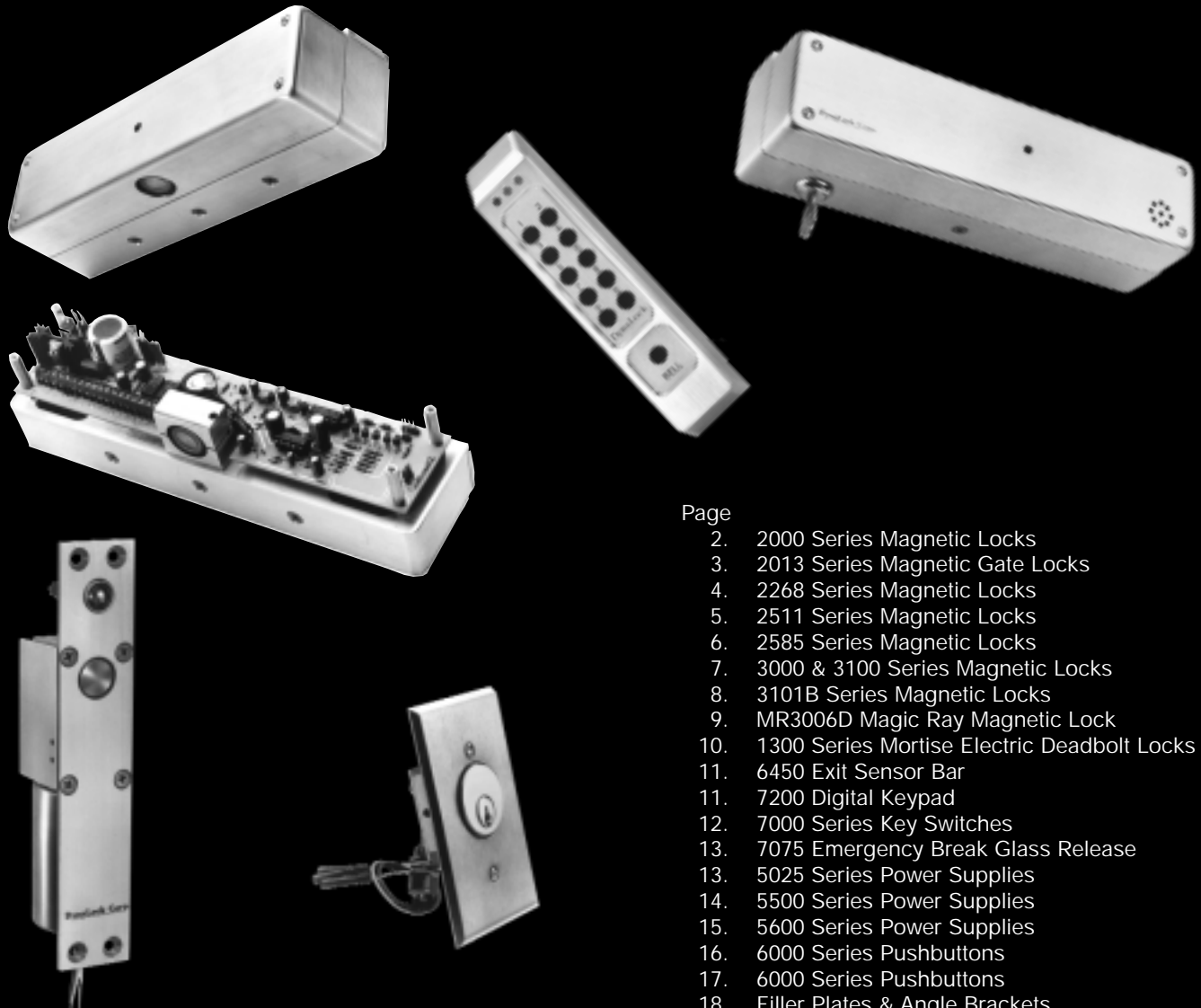




DynaLock



Page	
2.	2000 Series Magnetic Locks
3.	2013 Series Magnetic Gate Locks
4.	2268 Series Magnetic Locks
5.	2511 Series Magnetic Locks
6.	2585 Series Magnetic Locks
7.	3000 & 3100 Series Magnetic Locks
8.	3101B Series Magnetic Locks
9.	MR3006D Magic Ray Magnetic Lock
10.	1300 Series Mortise Electric Deadbolt Locks
11.	6450 Exit Sensor Bar
11.	7200 Digital Keypad
12.	7000 Series Key Switches
13.	7075 Emergency Break Glass Release
13.	5025 Series Power Supplies
14.	5500 Series Power Supplies
15.	5600 Series Power Supplies
16.	6000 Series Pushbuttons
17.	6000 Series Pushbuttons
18.	Filler Plates & Angle Brackets

JLM
WHOLESALE

Complete Door Hardware Solutions

Mid West 1-800-522-2940

FAX 1-800-782-1160

JLM Wholesale 3095 Mullins Court Oxford, MI 48371

South East 1-800-768-6050

FAX 1-800-824-6051

JLM Wholesale SE 7517-A Orr Rd. Charlotte, NC 28213

2000 SERIES ELECTROMAGNETIC LOCKS

2000 Series Electromagnetic Locks

Each 2000 Series Electromagnetic Lock is comprised of 3 basic components: a lock housing, an electromagnetic coil and an armature. The coil and housing assembly mounts rigidly to the door frame while the armature mounts to the door in a manner that allows it to pivot slightly to compensate for door irregularities. When the door is closed and the lock is energized the armature is magnetically bonded to the lock face, thus securing the door without utilizing any moving parts.

Features:

- Internal wiring compartment includes built-in circuit board attached to access cover to provide a convenient, plug in, concealed area for wiring connections.
- Adjustable mounting bracket reduces installation time and improves product performance.
- Low power consumption conserves energy, reduces installation cost, and extends battery back-up time.
- Plated coil and armature assembly are standard for maximum resistance to corrosion.
- 10 year limited warranty.
- Economical, lower priced than most other electromagnetic locks of similar construction and features.
- No residual magnetism - the door will release without delay when the lock is de-energized.
- Built-in spike suppression protects other solid state components within the system from damage when the lock is de-energized.
- Narrow backset, a thin lock section (1-1/2") may mean the elimination of additional mounting brackets.
- Multiple sensor and monitor options increase the flexibility, security, and compatibility of system equipment.

Models:

- 2011 Single Outswinging Door - 1 Lock, 1 Armature.
- 2011TJ Single Inswinging Door - 1 Lock, 1 Armature, 1 "Z" Bracket.
- 2012 Single Lock Center Mounted on a Pair of Doors without a Center Mullion - 1 Lock, 2 Armatures. 550 lb. Holding Force per Door:
- 2022 Pair Outswinging Doors without a Vertical Center Mullion - 1 Dual Lock, 2 Armatures.

Specifications:

- Holding Force 1200 lbs. holding force per lock effectively deters forced access or egress.
- Voltage Field selectable 12VDC or 24VDC, 12VAC or 24VAC standard.
- Power Req. .42A@12VDC, .21A@24VDC
- Armature Size 1/2" x 2-3/8" x 7-3/8" except 2012 2012 - 1/2" x 2-3/8" x 3-5/8", 2 required.
- Lock Size 1-1/2" x 2-3/4" x 11"

Options:

- ATS - Anti-tamper switch signals removal of the lock housing cover.
- DSM - Door status switch signals door closed or ajar.
- DYNST - Force sensor indicates whether an efficient magnetic bond has occurred between the mating areas of the magnetic lock and armature face.
- SF - Special finish. Standard finish US28, other finishes available to match existing hardware.
- TD - Time delay. 1° - 45°.
- CLH - Custom length housing spanning the full opening width between door stops.
- L2 - Bi-color LED indicator for local signaling of lock or door status (order with Dynastat option).
- LP - Low power, 12 volt only 0.16amp@1200 lb. holding force.



HOW TO ORDER

2011 DSM

Model & Description		Options	
2011	Single Lock - Outswinging, 1 Lock & 1 Armature	ATS	TD
2011TJ	Single Lock - Inswinging, 1 Lock, 1 Arm. & 1 Z Brkt.	DSM	CLH
2012	Single Lock for Pair of Doors, 1 Lock & 2 Armatures	DYNST	L2
2022	Double Lock - Outswinging, 1 Dual Lock & 2 Arm.	SF	LP

See text above for detailed option descriptions.

Mid West 1-800-522-2940
FAX 1-800-782-1160

JLM Wholesale 3095 Mullins Court Oxford, MI 48371



South East 1-800-768-6050
FAX 1-800-824-6051

JLM Wholesale SE 7517-A Orr Rd. Charlotte, NC 28213

2013 SERIES ELECTROMAGNETIC GATE LOCKS

2013 Series Electromagnetic Gate Locks

2013 Series Electromagnetic Gate Lock is comprised of two basic components: a lock housing, with an electromagnetic coil and an armature. The coil and housing assembly mounts rigidly to the gate post while the armature mounts on the gate in a manner that allows it to pivot slightly to compensate for gate misalignment.

When the gate is closed and the lock is energized the armature is magnetically bonded to the lock face, thus securing the gate without utilizing any moving parts.

Features:

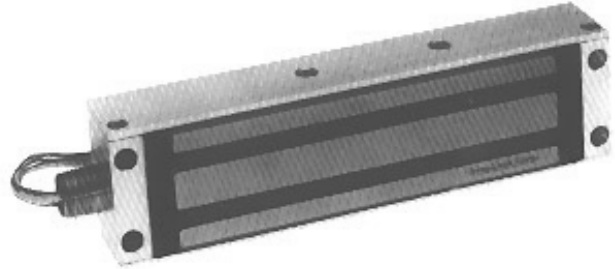
- Slide or swing installation
- Built-in spike suppression.
- Designed specifically for outdoor use.
- Low power consumption.
- Special zinc plating for maximum resistance to corrosion.
- No moving parts - low maintenance.
- Compensates for most gate alignment problems.
- Built-in 3/4" threaded sealed wiring fitting.

Specifications:

Holding Force 1200 lb.
 Voltage 12/24VDC operation, must be specified.
 Power Req. .42A@12VDC, .21A@24VDC
 Armature Size 1/2" x 2-3/8" x 7-3/8"
 Lock Size 1-1/2" X 2-1/2" x 9-1/4"

Options:

DYNST - Dynastat force sensor indicates whether an efficient magnetic bond has occurred between the mating areas of the magnetic lock and armature face.



HOW TO ORDER

2013 DYNST

Model & Description		Options
2013	Electromagnetic Gate Lock w/ 1200 lbs. Holding Force	DYNST
<i>See text above for detailed option descriptions.</i>		

Mid West 1-800-522-2940
 FAX 1-800-782-1160

JLM Wholesale 3095 Mullins Court Oxford, MI 48371



South East 1-800-768-6050
 FAX 1-800-824-6051

JLM Wholesale SE 7517-A Orr Rd. Charlotte, NC 28213

2268 SERIES ELECTROMAGNETIC LOCKS

2268 Series Electromagnetic Locks

The 2268 Lock is for life safety and high security on rated or non-rated doors and frames. It is specifically designed to offer a low profile for minimal projection into the door opening.

The lock housing projects only 2" into the door opening. This low profile provides maximum clearance for opening heights of 7-0 and less, to facilitate code compliance on designated egress doors.

Features:

- Non-handed - Includes a convenient area for wiring connections on each end of lock.
- Adjustable mounting base reduces installation time and improves product performance.
- Low power consumption.
- Plated coil and armature assembly are standard for maximum resistance to corrosion.
- 10 year limited warranty.
- No residual magnetism - The door will release without delay when the lock is de-energized.
- A low profile (2") provides maximum clearance for under-height door opening. The lowest profile of any full-size electromagnetic lock.
- Built-in spike suppression protects other solid state components within the system from damage when the lock is de-energized.

Models:

- 2268-10 Single Lock for an Outswinging Door.
- 2268-15 Single Lock for a Pair of Outswinging Doors.
- 2268-20 Double Lock for a Pair of Outswinging Doors.

Specifications:

- Holding Force 1200 lb.
- Voltage Field selectable 12VDC or 24VDC, 12VAC or 24VAC with optional RC rectifier.
- Power Req. .68A@12VDC, .35A@24VDC
- Armature Size 5/8"D x 1-3/4"H x 8-5/8"L
- Lock Size 2-3/16"D x 2"H x 14"L

Options:

- ATS - Anti-tamper switch signals removal of the lock housing cover.
- DSM - Door status switch signals door closed or ajar. *Not available on 2268-15.*
- DYNST - Force sensor indicates whether an efficient magnetic bond has occurred between the mating areas of the magnetic lock and armature face. *Not available on 2268-15.*
- LED - One bi-color LED indicator for local signaling of lock or door status. *Not available on 2268-15.*
- RC - Rectifier. Allows the lock to accept 12 or 24 volt AC input voltage.
- SF - Special finish. Standard finish US28, other finishes available to match existing hardware.
- TD - Time delay, 0-60 seconds adjustable delay on relock.



HOW TO ORDER

268-10 DSM

Model & Description		Options	
268-10	Single Lock - Outswinging Door	ATS	RC
268-15	Single Lock - Pair Outswinging Doors	DSM*	SF
268-20	Double Lock - Pair Outswinging Doors	DYNST*	TD
See text above for detailed option descriptions.		LED*	

**Not available on 2268-15.*

Mid West 1-800-522-2940
FAX 1-800-782-1160

JLM Wholesale 3095 Mullins Court Oxford, MI 48371



South East 1-800-768-6050
FAX 1-800-824-6051

JLM Wholesale SE 7517-A Orr Rd. Charlotte, NC 28213

2511 SERIES ELECTROMAGNETIC LOCKS

2511 Series Electromagnetic Locks

Each 2511 Series Electromagnetic Lock is comprised of three basic components: a lock housing, an electromagnetic coil and an armature. The coil and housing assembly mounts rigidly to the door frame while the armature mounts to the door in a manner that allows it to pivot slightly to compensate for door irregularities.

When the door is closed and the lock is energized the armature is magnetically bonded to the lock face, thus securing the door without utilizing any moving parts.

Features:

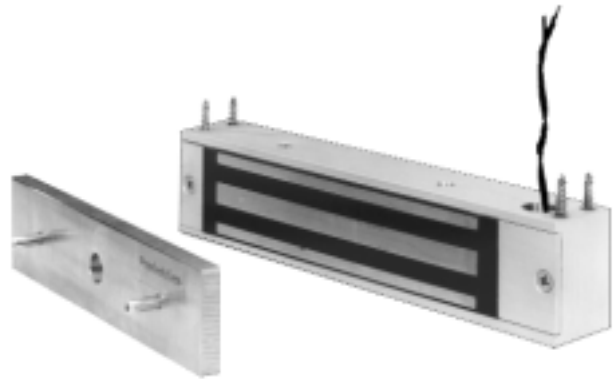
- Internal wiring compartment includes built-in circuit board attached to access cover to provide a convenient, plug in, concealed area for wiring connections.
- Low power consumption conserves energy, reduces installation cost, and extends battery back-up time.
- Plated coil and armature assembly are standard for maximum resistance to corrosion.
- 10 year limited warranty.
- Economical, lower priced than most other electromagnetic locks of similar construction and features.
- No residual magnetism - the door will release without delay when the lock is de-energized.
- Built-in spike suppression protects other solid state components within the system from damage when the lock is de-energized.
- Narrow backset, a thin lock section (1-1/4") may mean the elimination of additional mounting brackets.
- Multiple sensor and monitor options increase the flexibility, security, and compatibility of system equipment.
- A 10-1/2" long lock case will not interfere with closer arms and only project 1-3/4" into the door opening.

Specifications:

Holding Force 650 lb.
 Voltage Field selectable 12VDC or 24VD standard, 12VAC or 24VAC available, see RC option.
 Power Req. .5A@12VDC, .25A@24VDC
 Armature Size 3/8" x 1-1/2" x 6-1/2"
 Lock Size 1-1/4" x 1-3/4" x 10-1/2"

Options:

- DSM - Door status switch signals door closed or ajar.
 DYNST - Force sensor indicates whether an efficient magnetic bond has occurred between the mating areas of the magnetic lock and armature face.
 SF - Special finish. Standard finish US28, other finishes available to match existing hardware.
 L1 - One LED indicator for local signaling of lock or door status.
 L2 - Two LED indicators for local signaling of lock or door status.
 RC - Rectifier. Allows the lock to accept 12 or 24 volt AC input voltage.



HOW TO ORDER

2511 DYNST

Model & Description		Options	
2511	Single Lock - Outswinging Door, 1 Lock & 1 Arm.	DSM	L1
		DYNST	L2
		SF	RC

See text above for detailed option descriptions.

Mid West 1-800-522-2940
 FAX 1-800-782-1160

JLM Wholesale 3095 Mullins Court Oxford, MI 48371



South East 1-800-768-6050
 FAX 1-800-824-6051

JLM Wholesale SE 7517-A Orr Rd. Charlotte, NC 28213

2585 SERIES ELECTROMAGNETIC LOCKS

2585 Single Electromagnetic Locks

The 2585 "Bantam" is an economical compact electromagnetic lock for access control on non-rated doors and frames. It is specifically designed to offer a compact unit for applications where mounting space is limited.

Surge suppression is built-in. Leads with butt splices are provided for field hook-up.

Features:

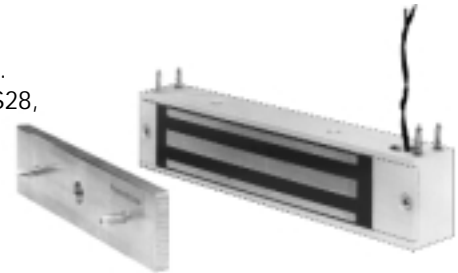
- Protected against corrosion, a totally plated coil and armature assembly are standard.
- Built-in spike suppression protects other solid-state components within the system from damage when the lock is de-energized.
- Economical, lower priced than most other electromagnetic locks of similar construction and features.
- 10 year limited warranty.
- Low power consumption.
- No residual magnetism, the lock will release without delay when de-energized.
- Compact lock length, an 8-1/2" long lock case will not interfere with closer arms and only projects 1-3/4" into the door opening.
- Narrow backset, a thin lock section (1-1/4") may eliminate the need for additional mounting brackets.

Specifications:

Holding Force 650 lbs.
 Voltage 12VDC or 24VDC standard, specify when ordering. 12VAC or 24VAC when using #7088 rectifier. *Order separately.*
 Power Req. .50A@12VDC, .25A@24VDC
 Armature Size 3/8" x 1-1/2" x 6-1/2"
 Lock Size 1-1/4" x 1-3/4" x 8-1/2"L

Options:

SF - Special finish.
 Standard finish US28,
 other finishes available to match existing hardware.



HOW TO ORDER

2585 SF

Model & Description		Options
2585	Single Electromagnetic Lock w/ 650 lbs. Holding Force	SF

See text above for detailed option descriptions.

Mid West 1-800-522-2940
 FAX 1-800-782-1160

JLM Wholesale 3095 Mullins Court Oxford, MI 48371



South East 1-800-768-6050
 FAX 1-800-824-6051

JLM Wholesale SE 7517-A Orr Rd. Charlotte, NC 28213

3000 & 3100 SERIES MAGNETIC LOCKS

3000 & 3100 Series Magnetic Locks

Each 3000 & 3100 Series magnetic lock is comprised of 3 basic components: a lock housing, an electromagnetic coil and an armature. The coil and housing assembly mounts rigidly to the door frame while the armature mounts to the door in a manner that allows it to pivot slightly to compensate for door irregularities. When the door is closed and the lock is energized the armature is magnetically bonded to the lock face, thus securing the door without utilizing any moving parts.

Features:

- The new Fas-Trak mounting system eliminates visible mounting screws and secures the lock to the header for the entire lock length.
- One piece, high strength, aluminum housing
- Locks incorporate no moving parts that may wear, jamb or need alignment after the initial installation.
- All components are either plated or anodized to minimize maintenance and insure a long product life.

Models:

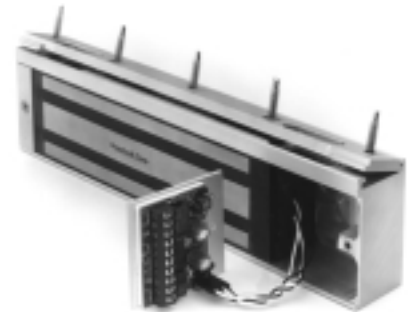
- 3000 Single Lock for an Outswinging Door.
- 3001 Split Armature for Pairs of Outswinging Doors.
- 3001TJ Split Armature for Pairs of Inswinging Doors.
- 3002 Double Lock for an Outswinging Door.
- 3003 Single Lock for an Inswinging Door.
- 3004 Double Lock for an Inswinging Door.
- 3101 Delayed Egress
- 3121 Del. Egress, Double Lock for Outswinging Doors.

Specifications:

- Holding Force 1500 pounds, 700 lbs. per door on 3001.
- Voltage 12/24VDC operation
- Power Req. .42A@12VDC, .21A@24VDC
- Backset 1-1/2"

Options:

- ATS - Anti-tamper switch signals removal of the wiring compartment access cover.
 - CLH - Custom length housing spanning the full opening width between door stops. (See 3500 thru 3800 Series)
 - DSM - Door status switch signals door closed or ajar.
 - DYN - Dynastat force sensor indicates whether an efficient magnetic bond has occurred between the mating areas of the magnetic lock and armature face.
 - SF - Special finish. Standard finish US28, other finishes available to match existing hardware.
 - L2 - Bi-Color LED indicator for local signaling of lock or door status (order with Dynastat option).
- Note: For pairs of doors use two sensors.



3000 Series



HOW TO ORDER

3000 DSM

Model & Description		Options	
3000	Single Lock - Outswinging Door	ATS	SF
3001	Single Lock - Pair of Outswinging Doors	DSM	CLH
3001TJ	Single Lock - Pair of Inswinging Doors	DYNST	L2
3002	Double Lock - Outswinging Door		
3003	Single Lock - Inswinging Door		
3004	Double Lock - Inswinging Door		
3101	Delayed Egress		
3121	Delayed Egress Double Lock - Outswinging Doors		

See text above for detailed option descriptions.

Mid West 1-800-522-2940
FAX 1-800-782-1160

JLM Wholesale 3095 Mullins Court Oxford, MI 48371



South East 1-800-768-6050
FAX 1-800-824-6051

JLM Wholesale SE 7517-A Orr Rd. Charlotte, NC 28213

3101B SERIES MAGNETIC LOCKS

3101B Series Magnetic Locks

The door is normally closed and latched by the existing mechanical door hardware and also magnetically secured by the 3101B lock. Attempting to exit by applying 15 lbs. or less pressure to the door will cause the door to become unlatched and activate the 3101B delay egress sequencer. The audible and red LED will pulsate for 15 seconds and, after the time delay has lapsed, the lock will release. The audible will then sound continually and the LED will change to green, until the door is shut and the lock is reset by a built-in remote keyswitch. The system unlocks automatically when signalled from the building emergency fire alarm system. Conforms to NFPA101 Life Safety Code.

Features:

- Self-contained - All electronics are on-board and require only lock input power and signal from fire panel (4 wires). Includes door sign.
- Microprocessor Controlled - An advanced digital processor on-board manages all lock functions, without the need for an external system controller and is factory programmable to meet varying job requirements.
- Watchdog Circuit - Will signal malfunction with pulsating LED and audible for maximum dependability.
- Fire Alarm Contacts - Selectable to accept dry N.O. or N.C. signals.
- Selectable Nuisance Delay - 1 or 3 seconds to deter false alarms.
- Opto-Electronic System Sensor - Featuring a new concealed optical sensor unaffected by wind, warpage or door sag.
- Sealed Construction - Unique sensor design, one piece lock housing and tamper resistant electronic cover protect unit from environmental contamination and tampering.
- Fail Safe - Unlocks instantly in event of power failure.



3101B

Specifications:

Holding Force 1500 pounds
 Voltage Field selectable 12/24 VDC or VAC
 Power Req. .75A@12VDC/VAC, .50A@24VDC/VAC
 Backset 1-1/2"
 Finish US28 satin aluminum w/ clear anodize.
 Lock Size 3"D x 2-3/4"H x 11"L
 Armature Size 1/2"D x 2-15/16"H x 7-3/8"L

Options:

ATS - Anti-tamper switch signals removal of the wiring compartment access cover.
 BOCA - Optional software allows operation in conformance with BOCA National Building Code.
 BPM - Bypass Monitor, An additional set of contacts signal when the on-board keyswitch is in the bypass position.
 DSM - Door status switch signals door closed or ajar.
 DYN - Dynastat force sensor indicates whether an efficient magnetic bond has occurred between the mating areas of the magnetic lock and armature face.
 ETR - Omits the on-board egress sensor in favor of externally triggered delayed release (DynaLock 6450 Exit Sensor Bar). Suggested for doors with active exterior trim or in absence of positive latching hardware.
 KSO - Omits the on-board keyswitch in favor of a remote switch. Suggested for door heights over 8 feet.
 UBC - Optional upgrade allows operation in conformance with Uniform Building Code (factory installation only).
 SF - Special finish. Standard finish US28, other finishes available to match existing hardware.

HOW TO ORDER

3101B BOCA

Model & Description		Options	
3101B	Delayed Egress Magnetic Locking System	ATS	ETR
		BOCA	KSO
		BPM	UBC
		DSM	SP
		DYNST	

See text above for detailed option descriptions.

Mid West 1-800-522-2940
 FAX 1-800-782-1160

JLM Wholesale 3095 Mullins Court Oxford, MI 48371



South East 1-800-768-6050
 FAX 1-800-824-6051

JLM Wholesale SE 7517-A Orr Rd. Charlotte, NC 28213

MR3006D MAGIC RAY MAGNETIC LOCK

MR3006D Magic Ray Magnetic Lock

A new concept in locking hardware designed to comply with NFPA 101 "Access Controlled Doors". By combining a 1500 pound holding force magnetic lock, exit sensor and input for an override pushbutton, this lock has all the needed components to comply with this code. Included for your access control application is a door status switch (DSM) and request to exit (REX) output to coordinate all functions of door security and access control.

Features:

- Integrated Curtain PIR Detector
- 2 Wire Operation
- Door Status Switch
- Request To Exit Output
- 2-10 Second Time Delay Input
- 35 Second Override Input
- Adjustable PIR Angle

Functions:

Access Timer: Adjustable from 2-10 seconds. For card reader or desk pushbutton input.

Egress Timer: Fixed @ 35 seconds and adjustable from 2-80 seconds if jumper is removed. For emergency override button as needed in NFPA 101.

Inhibit: Input to allow lock to release by an external egress device only. (Access Timer Input)

DSM Switch: SPDT Magnetic Door Contact monitors door position.

REX: SPDT request to exit output for access control systems. Activates whenever PIR is active or access input is tripped.

Specifications:

Holding Force 1500 pounds
 Voltage 12/24VDC operation
 PIR Sensor Unique "eyeball" mount permits a high degree of adjustment.

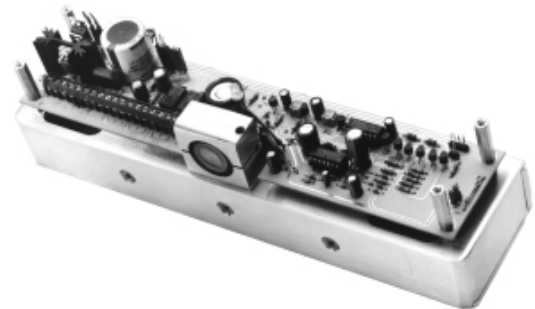
2-Wire Operation Ideal for retrofit of electric strike applications where a higher degree of security is needed. Proprietary electronics allow PIR Sensor to remain active for up to one hour during power interruptions.

Options:

SF - Special finish. Standard finish US28.



MR3006D



HOW TO ORDER

MR3006D SF

Model & Description		Options
MR3006D	Magnetic Lock with PIR Detector, REX and DSM	SF
MR3006	Magnetic Lock with PIR Detector and REX	

See text above for detailed option descriptions.

Mid West 1-800-522-2940
 FAX 1-800-782-1160

JLM Wholesale 3095 Mullins Court Oxford, MI 48371



South East 1-800-768-6050
 FAX 1-800-824-6051

JLM Wholesale SE 7517-A Orr Rd. Charlotte, NC 28213

DEADBOLT LOCKS

1300 Series Mortise Electric



1300 SERIES MORTISE ELECTRIC DEADBOLT LOCKS

1300 Series Mortise Electric Deadbolt Locks

1300 Series locks are fail safe, bolt extends only when power is applied and lock is energized. Interruption of power causes the bolt to automatically spring retract. Narrow 1-5/8" backset and compact design allows for installation where most deadbolt locks cannot. Optional built-in door and/or bolt position status monitoring with a choice of concealed or visible sensors. Has a built-in circuit board to simplify wiring and option selection.

Features:

- Versatile mounting, lock mounts in header or lock jamb plus top, vertical or bottom door stile when power is transferred to the door.
- Stainless steel deadbolt
- No buzzing when energized.
- All components are either plated or anodized to minimize maintenance and insure a long product life.



Specifications:

Weight 2 pounds
 Voltage 12 or 24VDC operation, specify.
 Power Req. .85A@12VDC, .45A@24VDC

Options:

ARSB - Auto Relock Switch Ball Type: SPDT switch insures that the deadbolt will only project when the door is in the closed position.

ARSM - Auto Relock Switch Concealed: SPST magnetic reed switch similar function as ARSB. Not recommended for installation on steel doors.

BPS - Bolt Position Switch: SPDT switch signals a bolt extended or bolt retracted condition. Popular uses include door interlocks and synchronizing bolt position with door location when using automatic door equipment.

DPSB - Door Position Switch Ball Type: SPDT switch signals a door closed/door ajar condition to a remote location. Useful for door interlocking.

DPSM - Door Position Switch Concealed: SPDT proximity type switch similar function as DPSB. Not recommended for installation on steel doors.

MB - Mounting Bracket: 1 set (4 pieces) of pre-drilled mounting brackets to facilitate lock mounting.

RC - Rectifier: Allows the lock to accept 12 or 24 volt AC input voltage.

HOW TO ORDER

130012 ARSM

Model & Description		Options	
130012	12VDC Mortise Electric Deadbolt Lock	ARSB	BPS
130024	24VDC Mortise Electric Deadbolt Lock	ARSM	MB
		DPSB	RC
		DPSM	

See text above for detailed option descriptions.

Mid West 1-800-522-2940

FAX 1-800-782-1160

JLM Wholesale 3095 Mullins Court Oxford, MI 48371



South East 1-800-768-6050

FAX 1-800-824-6051

JLM Wholesale SE 7517-A Orr Rd. Charlotte, NC 28213

6450 EXIT SENSOR BAR

6450 Exit Sensor Bar

This non-latching exit sensor bar offers immediate "no prior knowledge" egress by pushing on the bar at any point with 15 pounds or less pressure. A light touch is all that is required to activate one or both of the internal optical sensors designed to detect an exit attempt. Dual sensors, fail safe electronics and successful testing in excess of one million cycles offer the user unparalleled reliability and low maintenance costs. Complicated tune-in procedure and call backs for frequent adjustments are not required.

Features:

- No moving parts
- No tune-in required
- Any kind of touch will activate bar
- Weather resistant electronics
- All metal construction
- Armored power transfer card
- Dual output standard
- Built-in spike suspension
- Low profile, contemporary design
- Non-handed

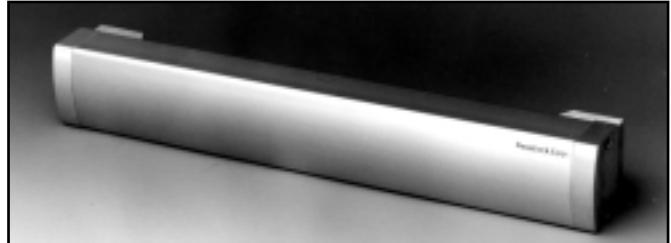
Specifications:

Voltage: 12 to 24 VAC or VDC

Power Required: 100ma at rest, 20ma when activated

Options:

- CAB-64** Cable kit 16 ft., 8 conductor 22 GA to facilitate wiring.
- CLC** Custom length cut. Specify distance between stops and stop thickness.
- WDK** Wood door kit. 4 thru bolts and 4 sex nuts fasten the sensor bar to a wood door.



HOW TO ORDER

6450 36 313 WDK

Model	Length		Finish		Options	
6450	36"	34" Overall	628	Aluminum	CAB-64	Cable Kit
	42"	40" Overall	313	Dk. Bronze	CLC	Custom L. Housing
	48"	46" Overall			WDK	Wood Door Kit

7200 DIGITAL KEYPAD

7200 Digital Keypad

The sleek 7200 narrow 1-1/2" wide design digital keypad represents the most technologically advanced system of this type in the industry. The exclusive concealed mounting plate design protects against tampering. This weatherproof keypad is totally encapsulated in epoxy for maximum protection. This keypad system was designed specifically to control any fail safe or fail secure electric lock providing an adjustable timed delay (range 1°-99°) thru DPDT contacts rated at 5 amps. All codes and programs are entered at the keypad and are acknowledged by the appropriate LED and audible beep. A program lock jumper located at the controller is provided to prevent unauthorized reprogramming at the keypad. 32 incorrect key presses lock out the keypad and sound a constant audible for 30 seconds.

Features:

- 11 active buttons for code entry, the 11th button may be programmed for bell, light or call functions.
- EEprom retains information during power interruptions.

Specifications:

Size 1-1/2" W x 3/4" D x 7" L
 Codes 60, 120 Optional Codes
 Cable 12 Conductor, 16 Ft.

Options:

- EM** - Expands code capacity from 60 to 120.
PSC - Keypad controller with 60 codes factory mounted & prewired in a 5025 power supply.
SSC - Spy shield protects for keypad.



HOW TO ORDER

7200 PSC

Model & Description		Options	
7200	US28 Keypad & Painted Blue Controller	EM	120 Codes
		PSC	5025 Power Supply
		SSC	Spy Shield

Mid West 1-800-522-2940
 FAX 1-800-782-1160

JLM Wholesale 3095 Mullins Court Oxford, MI 48371



South East 1-800-768-6050
 FAX 1-800-824-6051

JLM Wholesale SE 7517-A Orr Rd. Charlotte, NC 28213

7000 SERIES KEY SWITCHES

7000 Series Key Switches

Key switches are needed where a high degree of control is desired with regard to who may activate or deactivate a secured entrance or other electrically controlled pieces of equipment. Key switch mounting bracket is easily adjustable to accommodate most any standard 1-1/8" to 1-1/4" long standard mortise key cylinder fitted with specified clover leaf cam. Switches are available in momentary, maintained or time delay functions, with single or double pole contacts and may be ordered in most any combination of the above.

Models:

See chart at right.

Features:

- Tamper resistance, all visible screws are spanner head
- Heavy duty switching, switch capacity 6A at 125 volts
- Prewired, shipped with 6" long color coded 20 ga. leads

Specifications:

Face Plate 4-1/2"H x 2-3/4"W

Voltage 12-24 VAC or VDC

Options:

ATS - Anti-tamper switch located behind key switch cover-plate. Activated when coverplate is removed.

CYL - Mortise cylinder 1-1/4 long with cam.

KA - Keyed alike cylinders.

Key - Additional key.

L1 - One LED luminous indicator; specify color red or green.

L2 - Two LED luminous indicators; one each red or green.

NR - Narrow cover plate 1-3/4" x 4-1/2"

WPC - Weather proof cover.

Switch Description:

Maintained Contact: Rotating the key from vertical to its stop and back to vertical changes the state of the switch contact. To return the contact to its original state this procedure must be repeated once again.

Momentary Contact: Rotating the key to its stop changes the state of the switch contact while the key is held in that position, rotating the key to vertical returns the switch contact to its original state.

Time Delay: Rotating the key 180 degrees and back to vertical starts the time delay code.

Notes:

Keys are removable in the vertical position.

DPDT function similar to SPDT switches but include an additional set of contacts.

Cloverleaf type cams must be used.

Specify voltage 12-24 AC or DC when ordering options and 7035 or 7040 switches.

Models & Switch Data			
Model	Qty.	Contact	Type
7001	1	SPDT	Maintained
7002	1	SPDT	Momentary
7003	2	SPDT	Maintained
7004	2	SPDT	Momentary
7005	2	SPDT	1 Mom. / 1 Main.
7021	1	DPDT	Maintained
7022	1	DPDT	Momentary
7023	2	DPDT	Maintained
7024	2	DPDT	Momentary
7025	2	DPDT	1 Mom. / 1 Main.
7030	1	SPDT	Mech. Time Delay 5-12 Second Delay
7035	1	SPDT	Elect. Time Delay 5-120 Second Delay
7040	2	SPDT	Elect. Time Delay and Maintained
7050	1	SPDT	3101 Reset/Bypass Switch Center Pos. - Off



Mid West 1-800-522-2940

FAX 1-800-782-1160

JLM Wholesale 3095 Mullins Court Oxford, MI 48371



South East 1-800-768-6050

FAX 1-800-824-6051

JLM Wholesale SE 7517-A Orr Rd. Charlotte, NC 28213

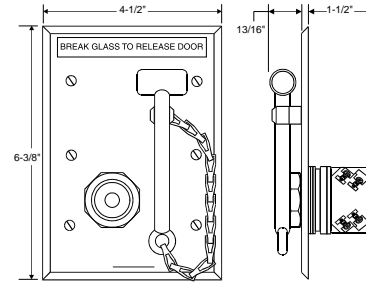
7075 EMERGENCY BREAK GLASS RELEASE

7075 Emergency Break Glass Release

Break glass switch assembly with hammer mounted on a three-gang stainless steel faceplate. Normally open (NO) and normally closed (NC) contacts rated 6A@120VAC. Has combination head screw terminal connectors.

Features:

- Furnished with 5 spare glass lenses.
- Stainless steel faceplate.



5025 SERIES POWER SUPPLIES

5025 Series Power Supplies

DynaLock's cost effective 5025 Series solid state power supplies have been designed to provide a constant source of field selectable (12 or 24VDC) filtered and regulated, low voltage power. The one amp output will power multiple maglocks and interface with other DynaLock access/egress control and monitor products.

Features:

- 1 amp output at 12 or 24VDC filtered and regulated.
- Built-in battery charging circuit.
- Voltage is field selectable by movable jumpers.
- May be interfaced with NC master release.
- Fused resettable low voltage output.

Electrical:

Input Power 110VAC 60HZ @ 1/2 Amp
 Input Terminals 3 #10 Screw Terminals
 Output Voltage 12VDC Nominal (13.8V)
 24VDC Nominal (27.6V)
 Field Selectable, Filtered & Regulated
 Output Power 1A@12VDC or 24VDC
 Output Terminals 4 #14 Screws

Specifications:

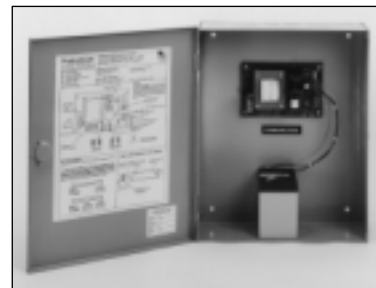
Size 12"W x 15"L x 4"D
 Weight 9 pounds

Options:

- ATS - Anti-tamper switch indicates opening of cover.
- BBU-1 - Battery back-up 7 AH 12VDC with cable kit.
- BBU-2 - Battery back-up, 2 batteries with cable kit, 14AH@12VDC, 7 AH@24VDC.
- CAB - Cable kit for batteries.
- KLC - Key lock cover.
- PC - 6' power cord.

Lock Capacities:

Single Full Size	Double Mini
12VDC 2	12VDC 1
24VDC 4	24VDC 1
Double Full Size	Single Delayed Egress
12VDC 1	12VDC 1
24VDC 2	24VDC 1
Single Mini	Deadbolt
12VDC 3	12VDC 1
24VDC 3	24VDC 1



HOW TO ORDER

5025 BBU-1 KLC

Model & Description		Options	
5025	1 Amp Power Supply	ATS	Anti-Tamper Switch
		BBU-1	1 Battery Backup & Cable Kit
		BBB-2	2 Battery Backups & Cable Kit
		CAB-2	Cable Kit for Batteries
		KLC	Keyed Lock Cover
		PC-2	6 Foot Power Cord

POWER SUPPLIES

5500 Series Medium Duty



5500 SERIES MEDIUM DUTY POWER SUPPLIES

5500 Series Medium Duty Power Supplies

DynaLock's 5500 Series offers the reliability of solid state electronics, the versatility of field selectable multi-voltage output and the flexibility of modular design. The 5500 Power Supply may be upgraded from a basic source of power by specifying an optional 5 or 10 position fused distribution board which will also accept individual control modules. The entire supply may be interfaced with the building emergency panel by specifying the optional fire alarm module.

Features:

- Field selectable voltage output 12VDC or 24VDC
- Choice of 4 or 7 amp hour battery back-up capacity
- Fire alarm tie-in capability (with FAC option)
- Filtered and regulated voltage output
- Built-in battery charging circuit
- Removable enclosure cover
- Power on LED

Electrical:

Input Voltage 110VAC@1A
 Input Terminals 10AWG Capacity 3 Provided
 Output Voltage 12VDC Nominal (13.8V) or 24VDC Nominal (27.6V)
 Field Selectable by Switch
 Output Current 3A@12VDC - 2A@24VDC
 Input Fuse 1 Amp 3AG Slo Blo
 Output Fuse Battery 5 Amp 3AG Slo Blo
 Power 5 Amp 3AG Slo Blo
 Basic Output Term. 10AWG Capacity 2 Plus - 2 Minus

Specifications:

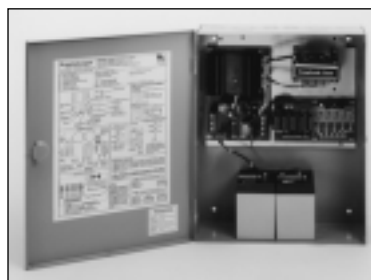
Size 12"W x 15"L x 4"D
 Weight 10 lbs. plus an additional 6 lbs. per battery

Lock Capacities:

Single Full Size		Double Mini	
12VDC	6	12VDC	3
24VDC	8	24VDC	4
Double Full Size		Single Delayed Egress	
12VDC	3	12VDC	3
24VDC	4	24VDC	3
Single Mini		Deadbolt	
12VDC	6	12VDC	3
24VDC	8	24VDC	4

Options:

ATS - Anti-tamper switch indicates opening of cover
 BBU - Battery back-up with a choice of 2 different size batteries in combination offering 4 or 7 amp hour at 12 or 24 volt DC, includes cable
 CAB - Cable kit for batteries
 CM - Control module 1 zone plugs into distribution board
 CMTD - Same as control module with addition of 1-80° adjustable time delay relock
 FAC - Fire alarm module plugs into primary circuit board to deactivate system when signalled by emergency panel
 DB-5 - Distribution board expands base unit to 5 zones with fused power outputs - accepts up to 5 control modules
 DB-10 - Distribution board expands base unit to 10 zones with fused power outputs - accepts up to 10 control modules
 KLC - Key lock cover
 PC - Power cord 6'



HOW TO ORDER

5500 DB-10 KLC

Model & Description		Options	
5500	3A@12VDC, 2A@24VDC	ATS	Anti-Tamper Switch
		BBU	Battery Backup & Cable Kit
		CAB	Cable Kit for Batteries
		CM	Control Module - 1 Zone
		CMTD	CM w/ Adj. Time Delay Relock
		FAC	Fire Alarm Module
		DB-5	Distribution Board - 5 Zones
		DB-10	Distribution Board - 10 Zones
		KLC	Keyed Lock Cover
		PC	6 Foot Power Cord

Mid West 1-800-522-2940
 FAX 1-800-782-1160



South East 1-800-768-6050
 FAX 1-800-824-6051

JLM Wholesale 3095 Mullins Court Oxford, MI 48371

JLM Wholesale SE 7517-A Orr Rd. Charlotte, NC 28213

5600 SERIES HEAVY DUTY POWER SUPPLIES

5600 Series Heavy Duty Power Supplies

Dynalock's 5600 Series power supplies offer the highest power output of the entire 5000 Series line. Specify 12 or 24 volt output when ordering to match the operating voltage requirement of other system components. The 5600 Series power supply features the reliability of solid state electronics and the convenience of modular plug-in design. The 5600 Power Supply may be upgraded from a basic source of power by specifying an optional 5 or 10 position fused distribution board which will also accept individual control modules. The entire supply may be interfaced with the building emergency panel by specifying the optional fire alarm module.

Features:

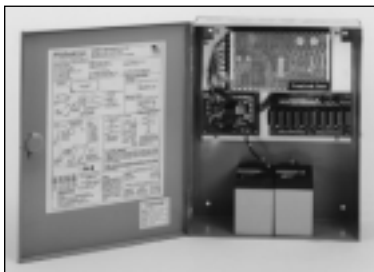
- Two available voltage outputs, 12VDC or 24VDC
- Choice of 4 or 7 amp hour battery back-up capacity
- Fire alarm tie-in capability (with FAC option)
- Filtered and regulated voltage output
- Built-in battery charging circuit
- Batteries install in the enclosure
- Power on LED

Electrical:

Input Voltage 110VAC@1A
 Input Terminals 10AWG Capacity 3 Provided
 Output Voltage 12VDC Nominal (13.8V) or 24VDC Nominal (27.6V)
 Specify when ordering.
 Output Current 10A@12VDC - 5A@24VDC
 Input Fuse 5 Amp 3AG Slo Blo
 Output Fuse 12VDC Battery 12 Amp 3AG Slo Blo
 Power 12 Amp 3AG Slo Blo
 Output Fuse 24VDC Battery 6 Amp 3AG Slo Blo
 Power 6 Amp 3AG Slo Blo
 Basic Output Term. 10AWG Capacity 2 Plus - 2 Minus

Specifications:

Size 12"W x 15"L x 4"D
 Weight 10 lbs. plus an additional 6 lbs. per battery



Lock Capacities:

Single Full Size		Double Mini	
12VDC	18	12VDC	9
24VDC	18	24VDC	9
Double Full Size		Single Delayed Egress	
12VDC	9	12VDC	11
24VDC	9	24VDC	8
Single Mini		Deadbolt	
12VDC	18	12VDC	10
24VDC	18	24VDC	9

Options:

ATS - Anti-tamper switch indicates opening of cover.
 BBU - Battery back-up with a choice of 2 different size batteries in combination offering 4 or 7 amp hour at 12 or 24 volt DC, includes cable.
 CAB - Cable kit for batteries.
 CM - Control module 1 zone plugs into distribution board
 CMTD - Same as control module with addition of 1-80° adjustable time delay relock.
 FAC - Fire alarm module plugs into primary circuit board to deactivate system when signalled by emergency panel.
 DB-5 - Distribution board expands base unit to 5 zones with fused power outputs - accepts up to 5 control modules.
 DB-10 - Distribution board expands base unit to 10 zones with fused power outputs - accepts up to 10 control modules.
 KLC - Key lock cover.
 PC - Power cord 6'.

HOW TO ORDER

5600-12 CMTD KLC

Model & Description		Options	
5600-12	10A@12VDC Supply	ATS	Anti-Tamper Switch
5600-24	5A@24VDC Supply	BBU	Battery Backup & Cable Kit
		CAB	Cable Kit for Batteries
		CM	Control Module - 1 Zone
		CMTD	CM w/ Adj. Time Delay Relock
		FAC	Fire Alarm Module
		DB-5	Distribution Board - 5 Zones
		DB-10	Distribution Board - 10 Zones
		KLC	Keyed Lock Cover
		PC	6 Foot Power Cord

Mid West 1-800-522-2940
 FAX 1-800-782-1160

JLM Wholesale 3095 Mullins Court Oxford, MI 48371



South East 1-800-768-6050
 FAX 1-800-824-6051

JLM Wholesale SE 7517-A Orr Rd. Charlotte, NC 28213

PUSHBUTTONS

6000 Series



6000 SERIES PUSHBUTTONS

2³/₄" x 4¹/₂" Plate COMPACT RED PLASTIC PUSHBUTTONS - ENGRAVED EXIT 5A@125VAC

Model	Button Description	Contacts	Connection Type
6110	1 Red Plastic Button w/ EXIT	Select MOM or MAIN, SPDT	7" Color Coded Leads, 18AWG
6120	2 Red Plastic Buttons w/ EXIT	Select MOM or MAIN, SPDT	7" Color Coded Leads, 18AWG
6130	3 Red Plastic Buttons w/ EXIT	Select MOM or MAIN, SPDT	7" Color Coded Leads, 18AWG
6140*	4 Red Plastic Buttons w/ EXIT	Select MOM or MAIN, SPDT	7" Color Coded Leads, 18AWG

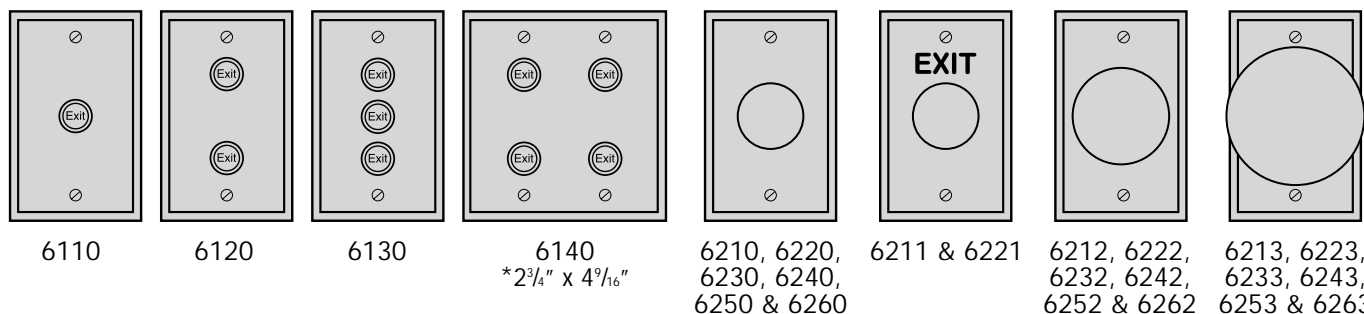
2³/₄" x 4¹/₂" Plate RED PLASTIC MUSHROOM PUSHBUTTONS 6A@125VAC

Model	Button Description	Contacts	Connection Type
6210	1 ⁵ / ₈ " Plain Button	MAIN - AA - SPDT	7" Color Coded Leads, 18AWG
6220	1 ⁵ / ₈ " Plain Button	MAIN - AA - DPDT	7" Color Coded Leads, 18AWG
6230	1 ⁵ / ₈ " Plain Button	MOM - NO - SPST	Screw Terminals
6240	1 ⁵ / ₈ " Plain Button	MOM - NO - DPST	Screw Terminals
6250	1 ⁵ / ₈ " Plain Button	MOM - NC - SPST	Screw Terminals
6260	1 ⁵ / ₈ " Plain Button	MOM - NC - DPST	Screw Terminals
6211	1 ⁵ / ₈ " Plain Button w/ EXIT On Plate	MAIN - AA - SPDT	7" Color Coded Leads, 18AWG
6221	1 ⁵ / ₈ " Plain Button w/ EXIT On Plate	MAIN - AA - DPDT	7" Color Coded Leads, 18AWG
6231	1 ⁵ / ₈ " Plain Button w/ EXIT On Plate	MOM - NO - SPST	Screw Terminals
6241	1 ⁵ / ₈ " Plain Button w/ EXIT On Plate	MOM - NO - DPST	Screw Terminals
6251	1 ⁵ / ₈ " Plain Button w/ EXIT On Plate	MOM - NC - SPST	Screw Terminals
6261	1 ⁵ / ₈ " Plain Button w/ EXIT On Plate	MOM - NC - DPST	Screw Terminals

2³/₄" x 4¹/₂" Plate FLAT RED METAL PUSHBUTTONS 6A@125VAC

Model	Button Description	Contacts	Connection Type
6212	2" Diameter Plain Button	MAIN - AA - SPDT	7" Color Coded Leads, 18AWG
6222	2" Diameter Plain Button	MAIN - AA - DPDT	7" Color Coded Leads, 18AWG
6232	2" Diameter Plain Button	MOM - NO - SPST	Screw Terminals
6242	2" Diameter Plain Button	MOM - NO - DPST	Screw Terminals
6252	2" Diameter Plain Button	MOM - NC - SPST	Screw Terminals
6262	2" Diameter Plain Button	MOM - NC - DPST	Screw Terminals
6213	2 ⁵ / ₈ " Diameter Plain Button	MAIN - AA - SPDT	7" Color Coded Leads, 18AWG
6223	2 ⁵ / ₈ " Diameter Plain Button	MAIN - AA - DPDT	7" Color Coded Leads, 18AWG
6233	2 ⁵ / ₈ " Diameter Plain Button	MOM - NO - SPST	Screw Terminals
6243	2 ⁵ / ₈ " Diameter Plain Button	MOM - NO - DPST	Screw Terminals
6253	2 ⁵ / ₈ " Diameter Plain Button	MOM - NC - SPST	Screw Terminals
6263	2 ⁵ / ₈ " Diameter Plain Button	MOM - NC - DPST	Screw Terminals

MOM = Momentary Operation AA = Alternate Action NO = Normally Open NC = Normally Closed



Mid West 1-800-522-2940
FAX 1-800-782-1160



South East 1-800-768-6050
FAX 1-800-824-6051

JLM Wholesale 3095 Mullins Court Oxford, MI 48371

JLM Wholesale SE 7517-A Orr Rd. Charlotte, NC 28213

6000 SERIES PUSHBUTTONS

2³/₄" x 4¹/₂" Plate FLAT RED METAL PUSHBUTTONS - ENGRAVED EXIT OR HANDICAP 6A@125VAC

Model	Button Description	Contacts	Connection Type
6214	2 ⁵ / ₈ " Diameter Button w/ EXIT	MAIN - AA - SPDT	7" Color Coded Leads, 18AWG
6224	2 ⁵ / ₈ " Diameter Button w/ EXIT	MAIN - AA - DPDT	7" Color Coded Leads, 18AWG
6234	2 ⁵ / ₈ " Diameter Button w/ EXIT	MOM - NO - SPST	Screw Terminals
6244	2 ⁵ / ₈ " Diameter Button w/ EXIT	MOM - NO - DPST	Screw Terminals
6254	2 ⁵ / ₈ " Diameter Button w/ EXIT	MOM - NC - SPST	Screw Terminals
6264	2 ⁵ / ₈ " Diameter Button w/ EXIT	MOM - NC - DPST	Screw Terminals
6215	2 ⁵ / ₈ " Diameter Button w/ Handicap	MAIN - AA - SPDT	7" Color Coded Leads, 18AWG
6225	2 ⁵ / ₈ " Diameter Button w/ Handicap	MAIN - AA - DPDT	7" Color Coded Leads, 18AWG
6235	2 ⁵ / ₈ " Diameter Button w/ Handicap	MOM - NO - SPST	Screw Terminals
6245	2 ⁵ / ₈ " Diameter Button w/ Handicap	MOM - NO - DPST	Screw Terminals
6255	2 ⁵ / ₈ " Diameter Button w/ Handicap	MOM - NC - SPST	Screw Terminals
6265	2 ⁵ / ₈ " Diameter Button w/ Handicap	MOM - NC - DPST	Screw Terminals

2³/₄" x 4¹/₂" Plate ILLUMINATED PUSHBUTTONS - RED EXIT OR BLUE HANDICAP 10A@125VAC

Model	Button Description	Contacts	Connection Type
6270	2 ⁵ / ₈ " Sq. Red Button w/ Black EXIT	MOM - 12/24 SPDT	7" Color Coded Leads, 18AWG
6271	2 ⁵ / ₈ " Sq. Blue Button w/ White Handicap	MOM - 12/24 SPDT	7" Color Coded Leads, 18AWG

2³/₄" x 4¹/₂" Plate TIME DELAY, VANDAL RESISTANT & CODE COMPLIANT PUSHBUTTONS

Model	Button Description	Contacts & Voltage	Connection Type
6275	3 ¹ / ₈ " Dia. Adj. 2°-60° Time Delay on Relock, SS	SPDT - 10A@125VAC	7" Color Coded Leads, 18AWG
6280	1" Dia. Vandal & Weather Resistant, SS	MOM - NO/NC - 1A@30VDC	7" Color Coded Leads, 18AWG
6281	1" Dia. Vandal & Weather Resistant, SS	MOM - NC - 3A@125VAC	7" Color Coded Leads, 18AWG
6282	1" Dia. Vandal & Weather Resistant, SS	AA - SPDT - 3A@125VAC	7" Color Coded Leads, 18AWG
6290	1 ⁵ / ₈ " Diameter Button w/ Pneumatic 30 Sec. Min. Relock Delay NFPA 101.	SPDT	

PUSHBUTTON OPTIONS

AUD - Audible sounder 1-28VDC, also specify DBL option.
 CB - Contact block, additional set of MOM SPST contacts - specify NO or NC may be added to a ny momentary controls.
 DBL - Double gang plate 4-9/16" wide provides space for options any except 6140 and 6291.
 ILM - Illuminated pushbutton, specify 12 or 24 volt. Available for 6110, 6120, 6130 and 6140 only.
 L1 - One LED indicator, specify 12 or 24 volt and color, red or green. Available on button diameters up to 2".

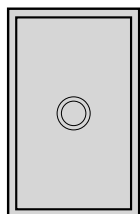
L2 - Two LED indicators, specify 12 or 24 volt and color, red or green. Available on button diameters up to 2".
 NR - Narrow plate 1-3/4" wide, button diameter is up to 1-5/8".
 P2 - Additional set of SPDT contacts Available for 6110, 6120, 6130 and 6140 only.
 TD - Time delay adjustable 1-60 seconds SPDT contacts rated 10A@125V. (replaces existing contacts).
 WPC - Weather proof cover single gang only, for 6110 only.



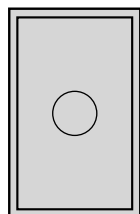
6214, 6224,
6234, 6244,
6254 & 6264



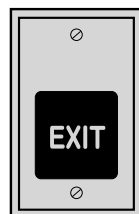
6215, 6225,
6235, 6245,
6255 & 6265



6275



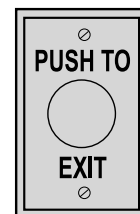
6280, 6281
& 6282



6270



6271



6290

Mid West 1-800-522-2940
 FAX 1-800-782-1160

JLM Wholesale 3095 Mullins Court Oxford, MI 48371



South East 1-800-768-6050
 FAX 1-800-824-6051

JLM Wholesale SE 7517-A Orr Rd. Charlotte, NC 28213

FILLER PLATES & ANGLE BRACKETS

FILLER PLATES - MAG LOCKS				
Single Mag Size A x B	2000/3000 11" Long	2268-10 14" Long	2511 10-1/2" Long	2585 8-1/2" Long
1/8 x 1-1/4	4011	4014	4010	4085
1/4 x 1-1/4	4111	4114	4110	4185
3/8 x 1-1/4	4211	4214	4210	4285
1/2 x 1-1/4	4311	4314	4310	4385
5/8 x 1-1/4	4411	4414	4410	4485
3/4 x 1-1/4	4441	4415	4430	4486
Double Mag Size A x B	2022/3002 22" Long	2268-20 25" Long	2522 21" Long	
1/8 x 1-1/4	4022	4025	4020	
1/4 x 1-1/4	4122	4125	4120	
3/8 x 1-1/4	4222	4225	4220	
1/2 x 1-1/4	4322	4325	4320	
5/8 x 1-1/4	4422	4425	4420	
3/4 x 1-1/4	4442	4426	4450	

ANGLE BRACKETS - MAG LOCKS				
Single Mag Size A x B	2000/3000 11" Long	2268-10 14" Long	2511 10-1/2" Long	2585 8-1/2" Long
1 x 1	4511	4514	4510	4585
1-1/2 x 1-1/2	4611	4614	4610	4685
1-1/2 x 2	4711	4714	4710	4785
Double Mag Size A x B	2022/3002 22" Long	2268-20 25" Long	2522 21" Long	
1 x 1	4522	4525	4520	
1-1/2 x 1-1/2	4622	4625	4620	
1-1/2 x 2	4722	4725	4720	

Mid West 1-800-522-2940
FAX 1-800-782-1160

JLM Wholesale 3095 Mullins Court Oxford, MI 48371



South East 1-800-768-6050
FAX 1-800-824-6051

JLM Wholesale SE 7517-A Orr Rd. Charlotte, NC 28213