

**REINFORCEMENT REQUIREMENTS**  
 PROVIDE ADEQUATE REINFORCEMENT TO METAL COVERED COMPOSITE AND HOLLOW METAL DOORS FOR THE DRILLING AND TAPPING FOR THE MACHINE SCREWS.

**SEX NUTS AND BOLTS**  
 SEX BOLTS ARE REQUIRED FOR PLASTIC, WOOD, METAL COVERED COMPOSITE AND HOLLOW METAL DOORS WITHOUT REINFORCEMENT

**SEX BOLT MACHINING**  
 DRILL 1/4 DIA. INSIDE  
 DRILL 5/16 DIA. OUTSIDE

**LBR DEVICES:**  
 OPENING TO GO 8" BELOW  
 HORIZONTAL  $\phi$  OF DEVICE

DOOR SKIN PLUS  
 REINFORCEMENT - 5/32 MAX

NOTCH THRU INSIDE  
 FACE 1-5/8 DEEP

2-3/4 BACKSET  
 OR CENTERED  
 ON EXPOSED  
 LOCKSTILE

HORIZONTAL  $\phi$   
 FOR DEVICE

RHR SHOWN - FOR LHR  
 REVERSE STILE MACHINING

39-15/16  
 FINISHED FLOOR

**TOP STRIKE  
 FRAME DETAIL**

INSIDE  
 STOP

DRILL AND TAP FOR  
 #10-24 SCREWS

7/32 DIA  
 INSIDE ONLY

FINISHED  
 FLOOR

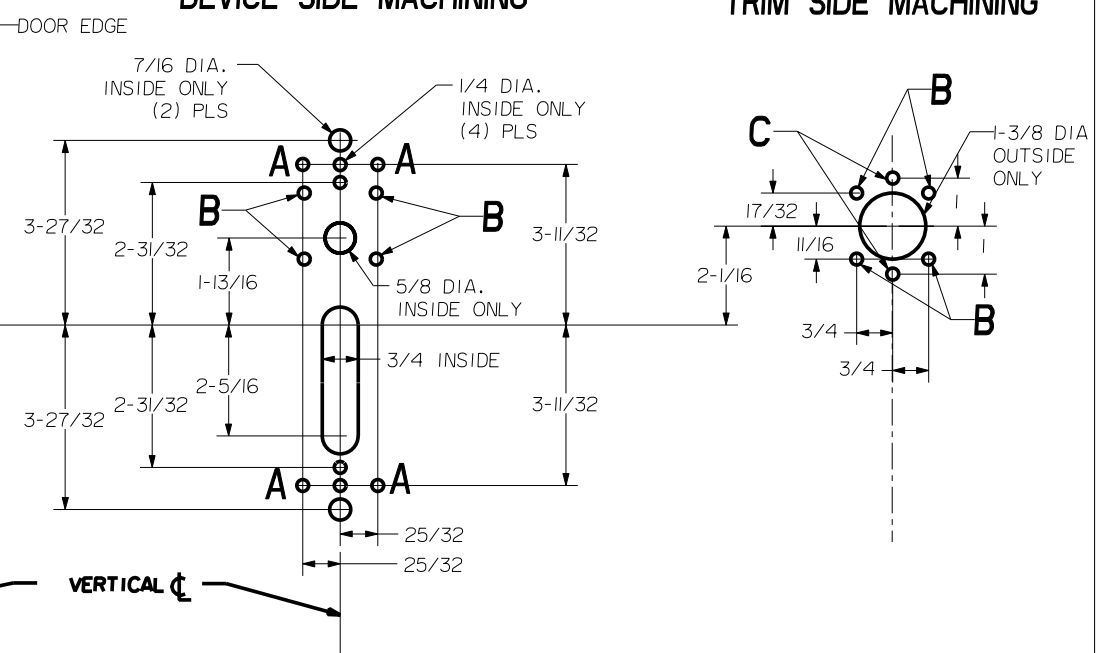
ACCOMMODATES 1/4  
 TO 3/4 GAP

**LBR DEVICES:**  
 OMIT BOTTOM BOLT MACHINING.  
 FIRE BOLT REQ'D FOR FL DEVICES  
 SEE DRAWING 01297-II-000 FOR DETAILS

HOLE (4) PLS <b>A</b>	DEVICES	TRIMS	HOLE <b>B</b>	HOLE <b>C</b>
#10-24 TAP INSIDE ONLY	<b>2803.FL2803</b>	CO3	1/4 DIA THRU DOOR	1/4 DIA OUTSIDE ONLY

**DEVICE SIDE MACHINING**

**TRIM SIDE MACHINING**



**PRECISION HARDWARE INC.**  
 WWW.PRECISIONHARDWARE.COM

DEVICE SERIES		TRIM SERIES	
2800, FL2800, 2800LBR, FL2800LBR		CO3	
STRIKE NO.	RELEASED DATE	TEMPLATE NO.	REV
S519, S460	01/07/04	HM-2800C	B