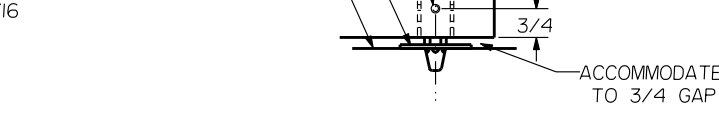
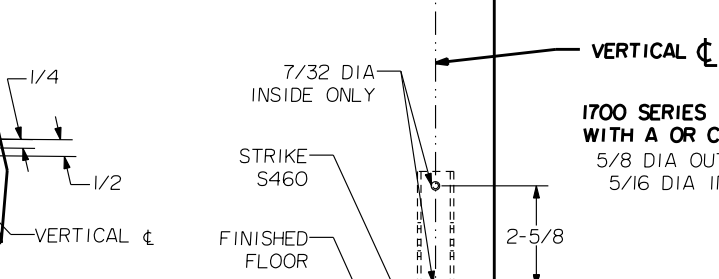
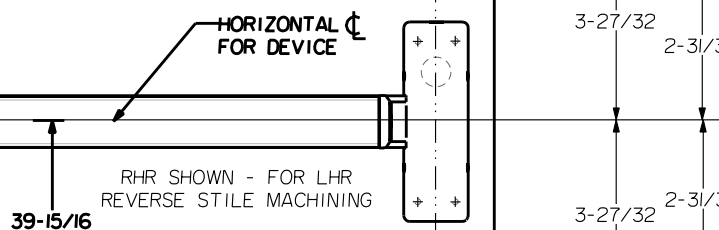
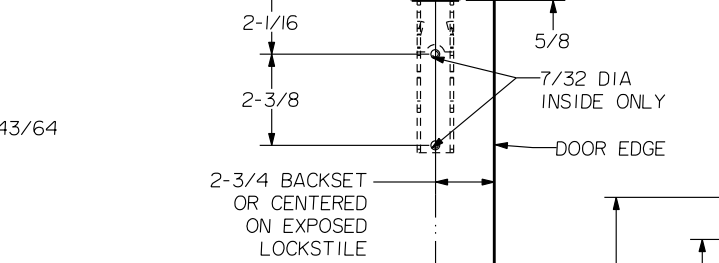
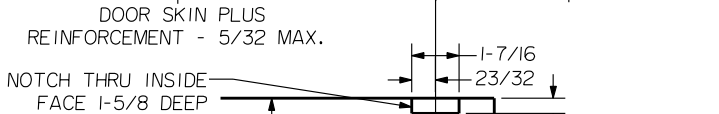
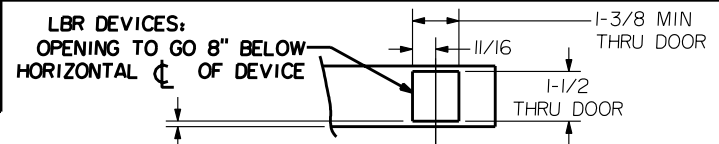


REINFORCEMENT REQUIREMENTS
 PROVIDE ADEQUATE REINFORCEMENT TO METAL COVERED COMPOSITE AND HOLLOW METAL DOORS FOR THE DRILLING AND TAPPING FOR THE MACHINE SCREWS.

SEX NUTS AND BOLTS
 SEX BOLTS ARE REQUIRED FOR PLASTIC, WOOD, METAL COVERED COMPOSITE AND HOLLOW METAL DOORS WITHOUT REINFORCEMENT.

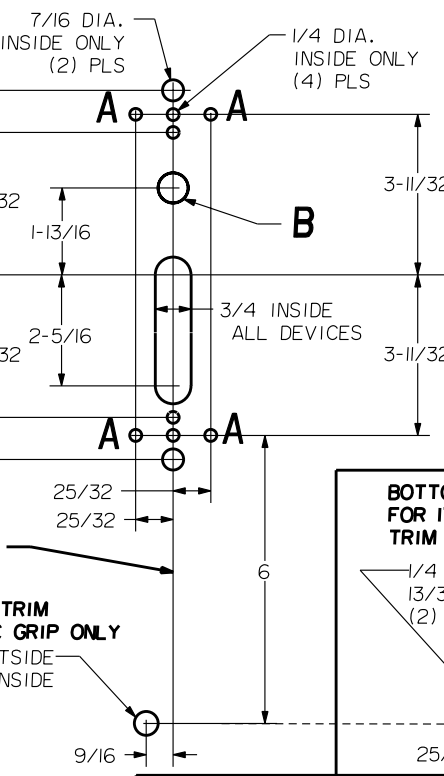
SEX BOLT MACHINING
 DRILL 1/4 DIA. INSIDE
 DRILL 5/16 DIA. OUTSIDE



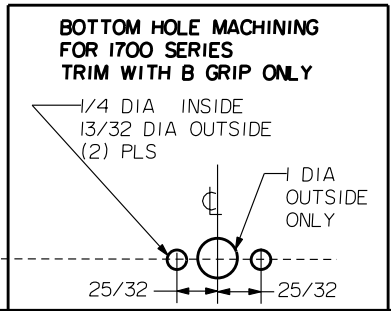
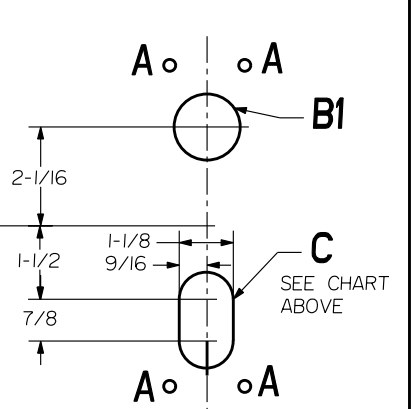
LBR DEVICES:
 OMIT BOTTOM BOLT MACHINING.
 FIRE BOLT REQ'D FOR FL DEVICES
 SEE DRAWING 01297-II-000 FOR DETAILS

HOLE (4) PLS A	DEVICES	TRIMS	HOLE B	HOLE B1	HOLE C
#10-24 TAP INSIDE ONLY	2803.FL2803 X EXIT ONLY	NONE	NO	NO	NO
1/4 DIA INSIDE 13/32 DIA OUTSIDE	2803.FL2803	CI701,3901	5/8 DIA INSIDE ONLY	1-3/8 DIA OUTSIDE ONLY	SLOT OUTSIDE ONLY
		CI702,3902			
	2808.FL2808	CI705	NO	NO	
		3908,V3908			
		CI715,3914			

DEVICE SIDE MACHINING



TRIM SIDE MACHINING



PRECISION HARDWARE INC.
 WWW.PRECISIONHARDWARE.COM

DEVICE SERIES		TRIM SERIES	
2800, FL2800, 2800LBR, FL2800LBR		EXIT ONLY, CI700, 3900	
STRIKE NO.	RELEASED DATE	TEMPLATE NO.	REV
S519, S460	04/01/03	HM-2800A	A

NOTE: "LETTER" AT END OF TRIM MODEL NO. DESIGNATES LEVER OR GRIP STYLE. EXCEPT AS NOTED, LEVER OR GRIP STYLE HAS NO EFFECT ON STILE MACHINING.