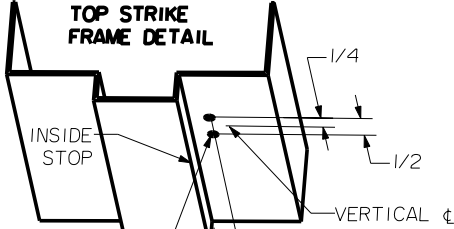
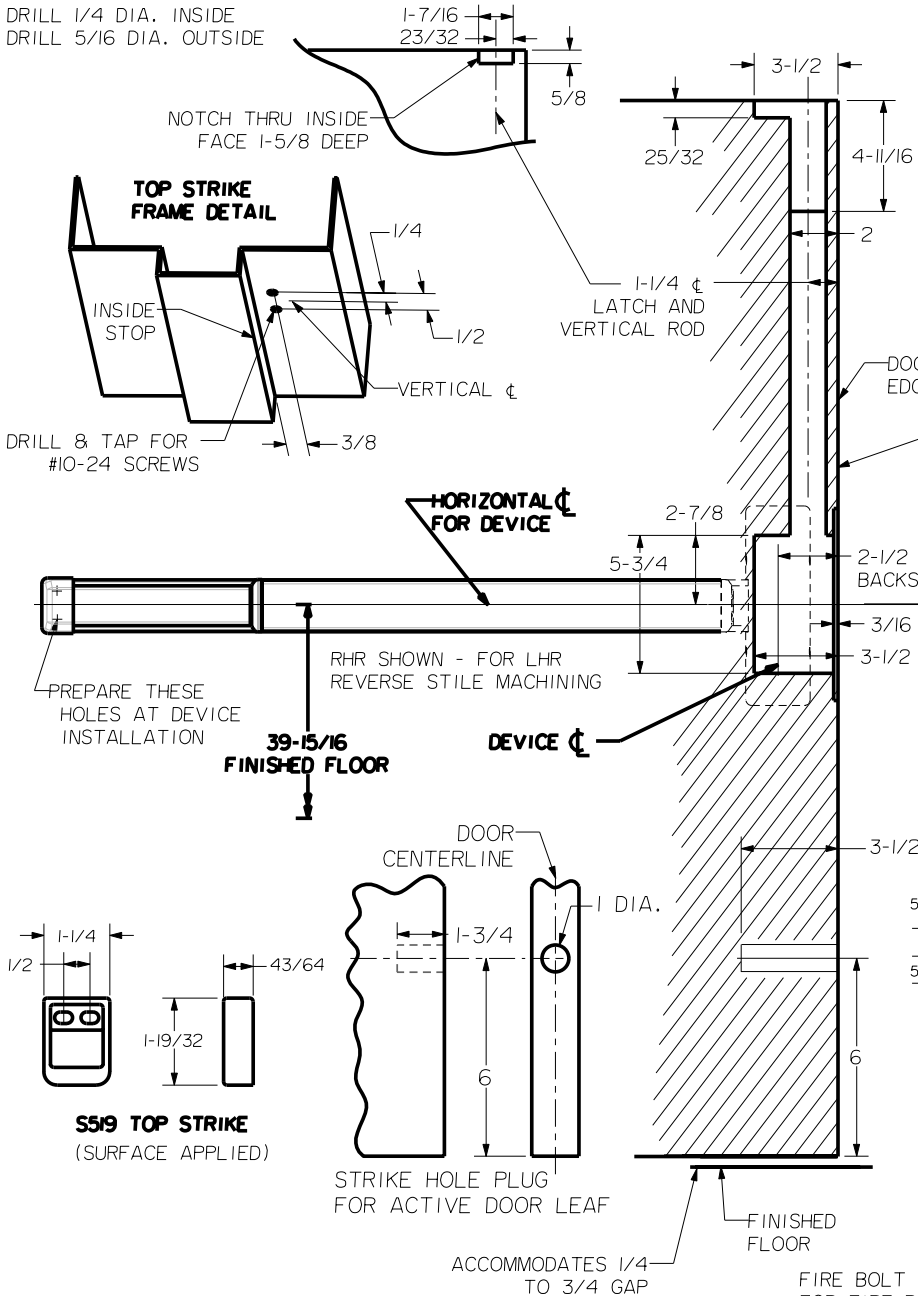


**SEX BOLT MACHINING**

DRILL 1/4 DIA. INSIDE  
DRILL 5/16 DIA. OUTSIDE

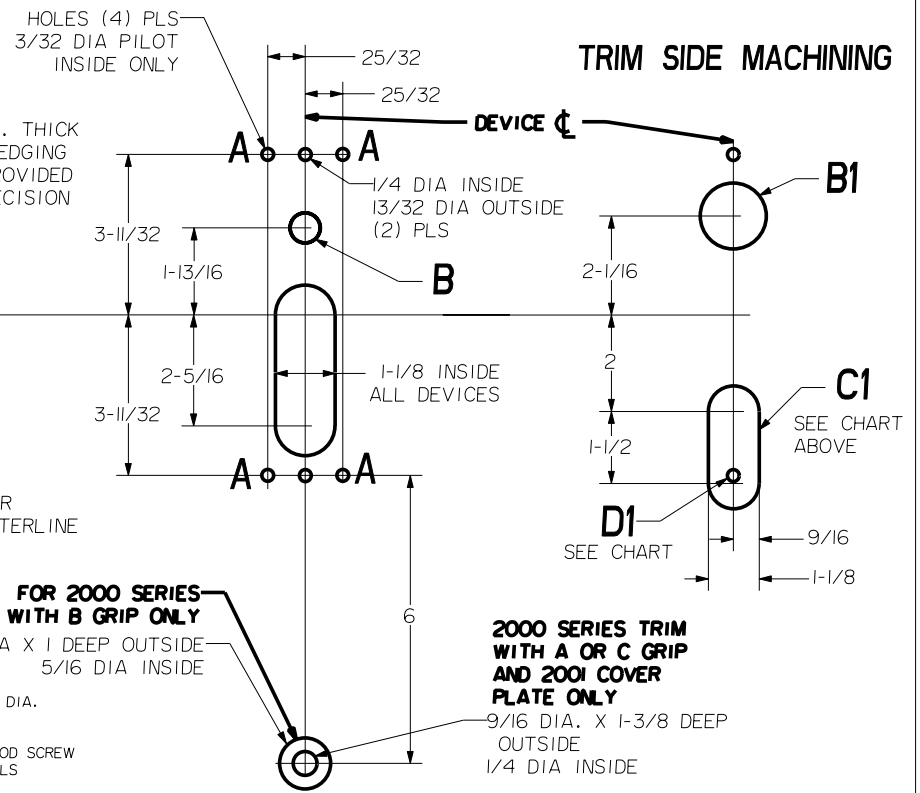
**INSIDE FACE OF DOOR**



**HORIZONTAL  $\phi$  FOR DEVICE**

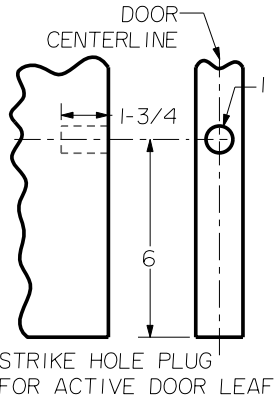
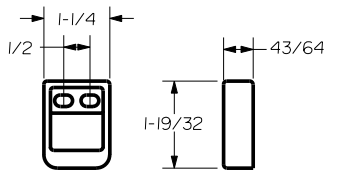
DEVICES	TRIMS	HOLE B	HOLE B1	HOLE C1	HOLE D1
2703LBR FL2703LBR	2001	NO	NO	NO	13/32 DIA THRU DOOR
	2002				
	2003				
2708LBR FL2708LBR	2005	5/8 DIA INSIDE ONLY	1-3/8 DIA OUTSIDE ONLY	1-1/8 X 1-1/2 SLOT OUTSIDE X 5/8 DEEP	NO
	2015	NO	NO		

**DEVICE SIDE MACHINING**



**TRIM SIDE MACHINING**

**S519 TOP STRIKE**  
(SURFACE APPLIED)



<b>PRECISION HARDWARE INC.</b> WWW.PRECISIONHARDWARE.COM			
DEVICE SERIES	TRIM SERIES		
2700LBR, FL2700LBR	2000		
STRIKE NO.	RELEASED DATE	TEMPLATE NO.	REV
S519	12/18/03	WD-2700LBRB	B

NOTE: "LETTER" AT END OF TRIM MODEL NO. DESIGNATES GRIP STYLE. EXCEPT AS NOTED, GRIP STYLE HAS NO EFFECT ON STILE MACHINING.