

SURFACE OVERHEAD DOOR HOLDERS / STOP

80 SERIES Heavy Duty



- **Hold Open, Stop Only Functions**
- **Selective Hold Open Mechanism**
- **Brass/Bronze, Steel and Stainless Steel Substrates**
- **Improved Jamb Bracket Design, Increased Compatibility with Door Closers**
- **Broad Range of Finishes**
- **Meets All Criteria for BHMA Grade 1 Holders / Stops**
- **Simplified Standardized Sizing**

Glynn-Johnson Door Controls
Ingersoll-Rand Company
P.O. Box 6135
Indianapolis, IN 46206

1-800-525-0336 (Customer Service)
317-899-9440 (General Office)
Fax :
1-800-525-0337 (Customer Service)
317-899-9432 (General Office)

In Canada:
Ingersoll-Rand Door Hardware
Port Credit P.O. Box 100
Mississauga, Ontario L5G 4L5
TEL: 905-278-6128 •FAX: 905-278-1413

APPLICATION INFORMATION

80 series holders and stops provide the most rugged surface mounted heavy duty door control. The shock absorber bracket is surface mounted to the door, most often with sex bolts, and the jamb bracket is surface mounted to the jamb, with a minimum of door and frame preparation. The attractive design is furnished in a wide variety of finishes to complement overall building needs.

These units may be used in conjunction with many surface applied door closers. In some cases, door closers may need to be mounted with optional drop brackets which are available from closer manufacturers. Glynn-Johnson also provides an angle jamb bracket (suffix J) which allows the stop only models to be mounted on the hinge or pull side of the door. This angle jamb bracket may also be used for flush transom mounting. Templates provided allow for variable mounting positions, ranging from 85° - 110° hold open/stop angle. 80 series holders are designed for installation in virtually all types of doors and frames and may be used on doors mounted on conventional butt type hinges, offset pivots, continuous hinges, as well as swing clear hinges and numerous other specialty type hinges. Refer to templates for standard type mounting arrangements. Refer any special applications to your local representative or to the factory for additional information.

80 series holders are designed for heavy duty applications. They are ideal for use on high-frequency openings and will provide long lasting protection to the door, frame, hinges, related hardware and surrounding walls or obstructions. The hold open function (suffix H) should be used where it is desired to hold a door open at a predetermined position for short or long periods of time, permitting an unobstructed traffic flow through the opening.

When the hold open function is not a requirement, the stop only function (suffix S) provides the same effective door control minus the hold open feature.

For situations where a wall or similar obstruction (i.e. doors that open back-to-back) is in place at 110° or less

opening angle, dead stop templating should be used. Dead stop templating can be used on hold open and stop only models. The dead stop position is where the shock absorbing spring is fully compressed. Therefore when dead stop templating is used, the initial degree of opening will be 5 to 7 degrees less than the dead stop opening. As an example, if the holder is templated for 100° dead stop then the door will open somewhere 93° to 95° and not go any further than 100°.

Environmental conditions should always be considered when specifying overhead holders and stops. Doors that open to the exterior of a building or are subject to corrosive conditions should be equipped with a holder constructed primarily of stainless steel, brass or bronze materials to insure a long operating life free of rust and corrosion.

Glynn-Johnson provides the most complete line of overhead holders and stops, providing solutions for the most complex door control problems. Refer to Glynn-Johnson literature for complete information on our various models.

SCREW DETAILS: STANDARD 80 SERIES
Jamb: 4 - #14 x 1 1/2" flat head wood screws
4 - 1/4" - 20 x 3/4" flat head machine screws
Door: 2 - 1/4" - 20 x 1 3/4" truss head machine screws
2 - 1/4" - 20 x 1 9/16" sex bolts

SCREW DETAILS: "HD" OPTION
Jamb: 4 - #14 x 1 1/2" flat head wood screws
4 - 1/4" - 20 x 3/4" flat head machine screws
Door: 4 - 1/4" - 20 x 1 3/4" truss head machine screws
4 - 1/4" - 20 x 1 9/16" sex bolts

BHMA/ANSI, FED. SPEC. CROSS REFERENCE

G-J Model	BHMA*	ANSI	FED. Spec.
802H - 806H	C03511	156.8	G-J 80
802S - 806S	C03541	156.8	G-J 80

*First numeral (0) designates optional material

To specify:

Brass / Bronze material, Change 0 to 1 (i.e. C13511)

300 Series Stainless Material, Change 0 to 5 (i.e.

C53511)

*Based on ANSI 156.8 Standard for Door Controls - Overhead

Holders and Stops - 1993

80 Series



- US32 and 32D finishes on stainless steel material — Increased durability and corrosion resistance
- Single Acting Doors
- Interior / Exterior Applications
- Reversible, Non-Handed

Glynn-Johnson 80 series surface mounted holders and stops are designed to provide the most effective shock absorbing capability. They provide protection for doors, frames and related hardware. These units have been redesigned to provide a more reliable hold open function and improved compatibility with many door closers. Available in brass/bronze, steel and stainless steel substrates, these units are furnished in a broad variety of finishes.

80 series units are available as 80H series hold open or 80S series stop only models, each available in five sizes to accommodate virtually all openings.

All models feature jointed-arm design and offset jamb brackets. The shock absorber mechanism provided on both hold open and stop only models delivers rugged, long lasting door protection, meeting BHMA grade 1 criteria for overhead holders and stops. The 80H series hold open mechanism is selective and may be turned off or on by a quarter-turn rotation of the winged control handle. When turned off, the 80H units act as a stop and shock absorber. When turned on, the door is held open at a predetermined position from 85° - 110°. The 80S series stop only models feature the same rugged shock absorber as

furnished on the 80H series but the hold open mechanism is not included.

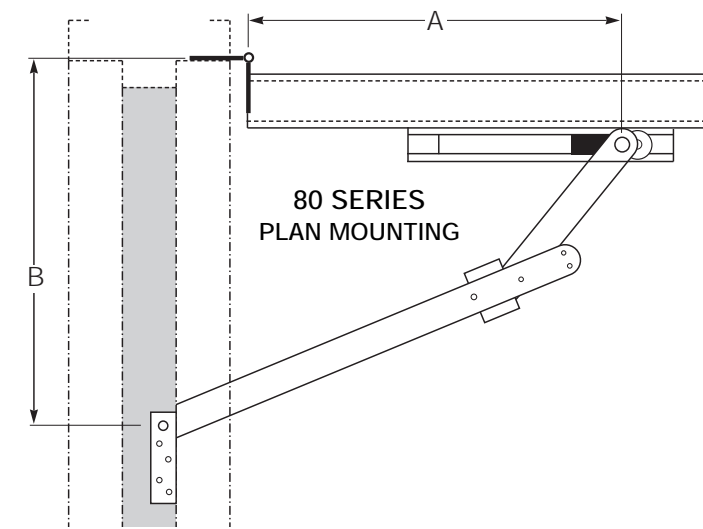
80H series holders and stops are provided in brass/bronze, steel and 300 series stainless steel substrates. US3, 4, 10, 10B finishes are furnished on a brass/bronze substrate. 300 series stainless steel is supplied in US 32 and 32D finishes, providing the highest resistance to corrosion. A range of painted finishes is available, on request, provided on brass material. Steel units are available in 652 plated finish.

80 series holders and stops are designed for heavy duty applications and provide long lasting protection for doors, frames, hardware and surrounding walls or obstructions. Refer to pages C-15 & C-16 for additional application information and to sizing chart for specific model selection.

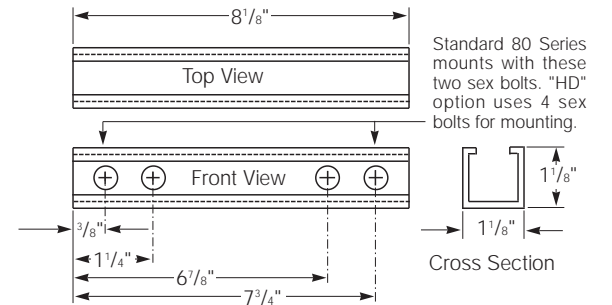
Other options available:

Suffix J - Angle jamb bracket-used to convert standard unit to hinge side (stop only models only) or flush transom mounting (ordered as 80/90J and affixed to standard jamb bracket).

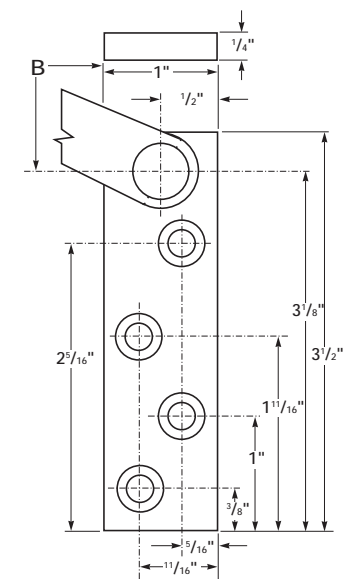
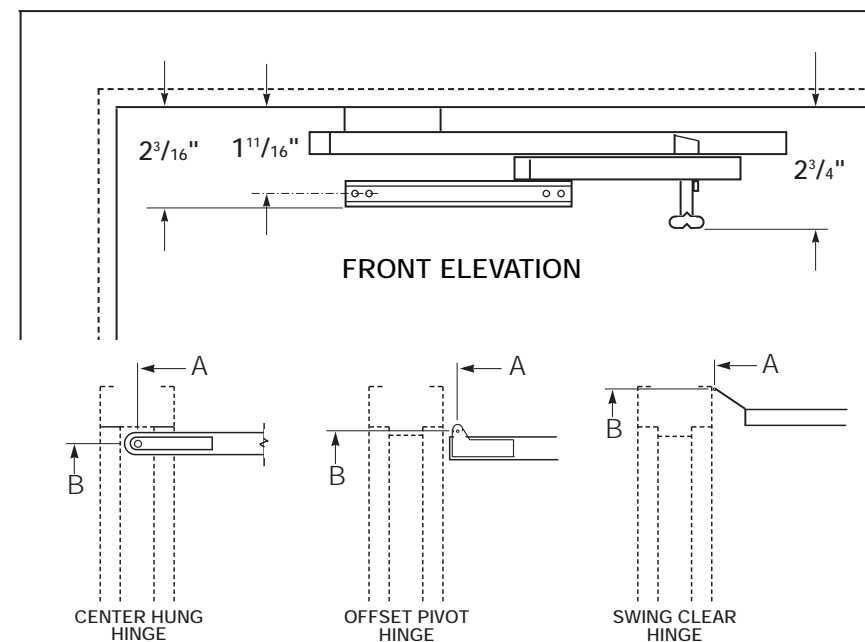
Suffix HD - Shock absorbing mechanism provided with four sex bolts for added durability.



The template information on this page is for reference only and is not intended to serve as an installation template. For complete dimensional information, refer to the Glynn-Johnson template book.



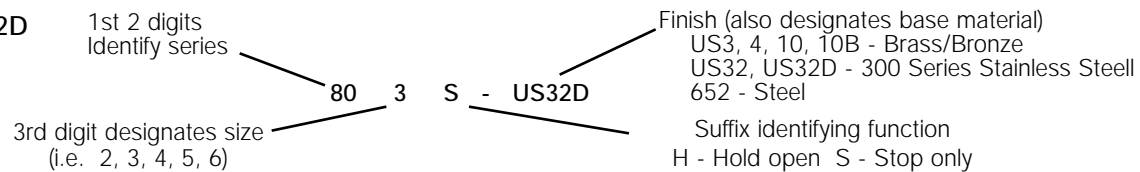
DOOR BRACKET



STANDARD JAMB BRACKET

ORDERING INFORMATION

Example:
803S - US32D



80 Series Sizing Chart						
SIZE	BUTTS/OFFSET PIVOTS			CENTER HUNG		
	DOOR OPENING	STOP ONLY	HOLD OPEN	DOOR OPENING	STOP ONLY	HOLD OPEN
1	-----	-----	-----	-----	-----	-----
2	23 1/16" - 27"	802S	802H	27 1/16" - 33"	802S	802H
3	27 1/16" - 33"	803S	803H	33 1/16" - 39"	803S	803H
4	33 1/16" - 39"	804S	804H	39 1/16" - 45"	804S	804H
5	39 1/16" - 45"	805S	805H	45 1/16" - 51"	805S	805H
6	45 1/16" - 51"	806S	806H	51 1/16" - 57"	806S	806H

Note: This chart illustrates the most common types of hinging and door opening sizes. For unusual door details, contact Glynn-Johnson for availability.